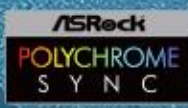




# CUBE

ALL-IN-ONE LIQUID COOLER WITH ARGB FANS





# Bitfenix Cube AIO

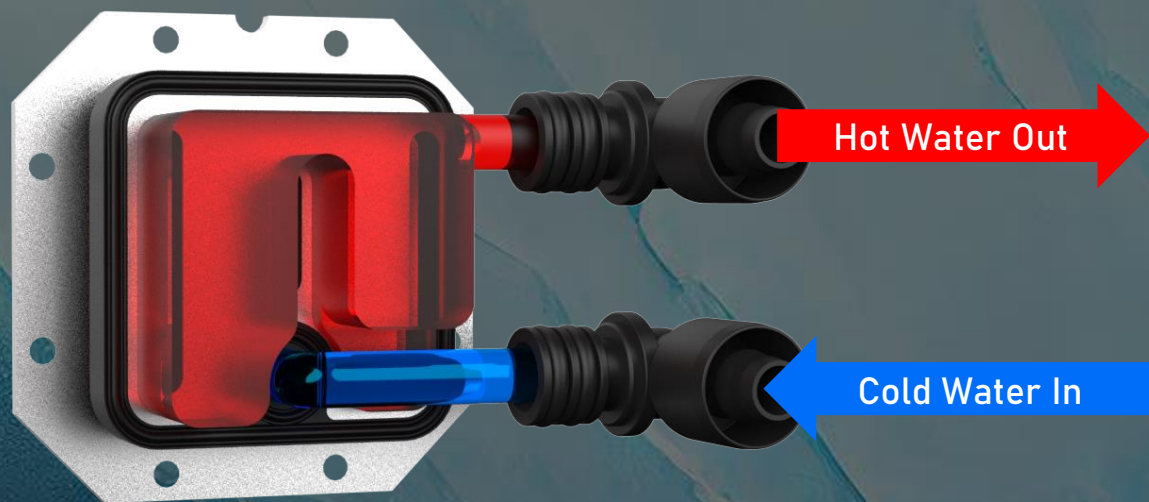
**Brand-new AIO pump:** Derived from the widely trusted water pump by players, it has a lift of 1.8 M with a high efficiency of 5500RPM and only 15DB working noise.

**Crystal Clear Water Block:** The fully transparent water block design allows players to quickly understand whether the device is working properly.

**ARGB Silent Fan with 0DB Mode:** The custom-designed fan for the Heightened heat sink has a wind pressure of 3.0MM-H2O, so that the high-end CPU can also maintain the correct temperature.

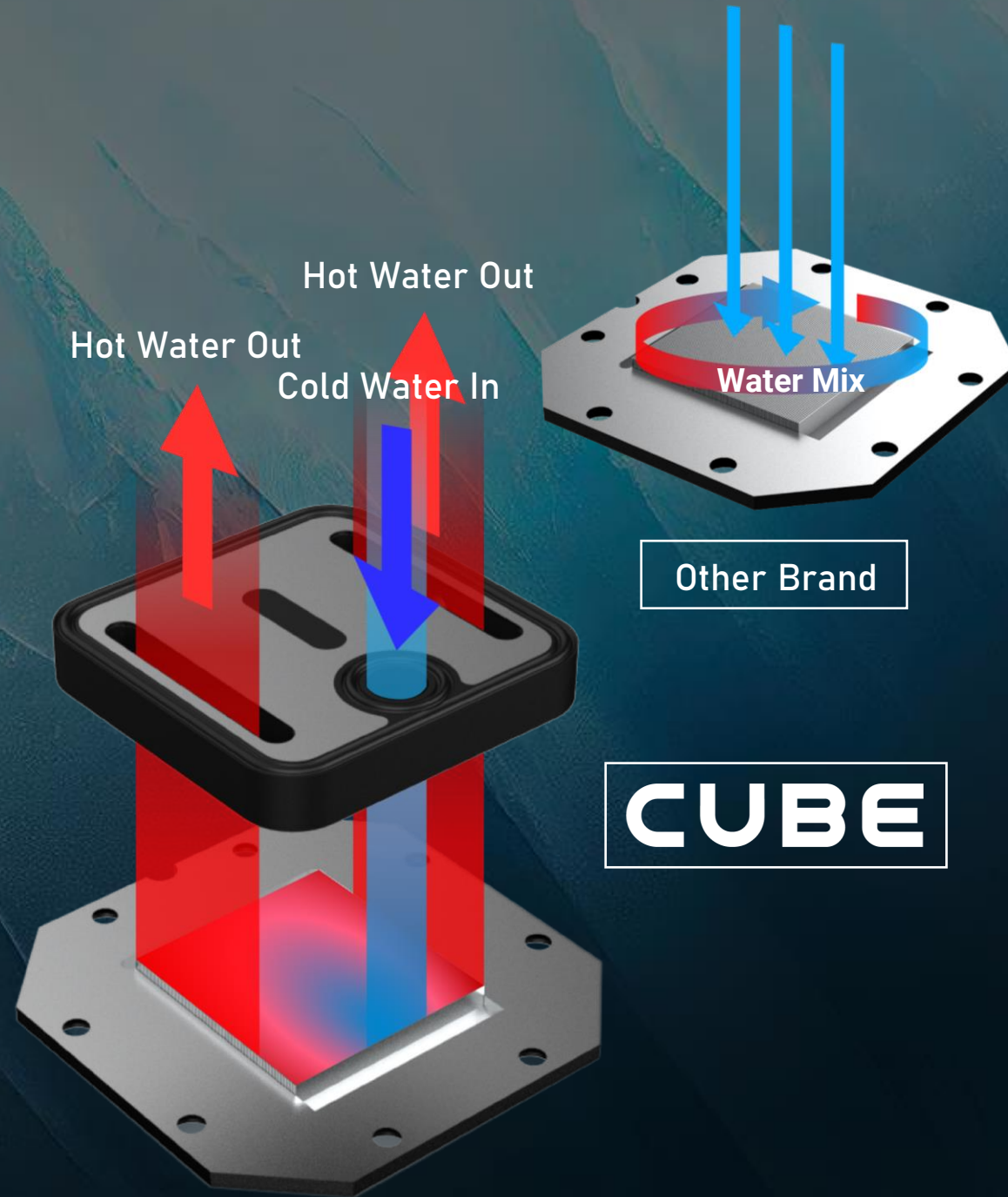


Support Motherboard-Brand Lighting Synchronization: Asus/Gigabyte/MSI/ASRock/Biostar...and other brands can support.



## Central Inlet Design with Optimized 0.2mm Micro-Channel Structure

Bitfenix Cube AIO's Block features a central inlet design with a jet plate equipped in the middle of the water block contacting the CPU heat source directly accelerating the extraction of heat. In addition, it has optimized 0.2mm micro-channels on the copper plate, providing flawless distribution of coolant with **superior heat transfer and durability**



# Pump

In order to match the latest top-level CPUs, we have developed a brand new pump based on the popular pump architecture. It has the ultimate specifications of **5500RPM and vertical lift of up to 1.8m, while operating at only 15db.**

Socket compatibility	Intel: 1700 / 1200 / 1150 / 1151 / 1155 AMD: AM5 / AM4
Pump speed (rpm)	5500 rpm
Pump adjustable	9V - 12V
Pump connector	4-pin
Tube length (mm)	Tube length (mm) 450
Noise level	15dB
Refill port	✓



12 heat sink water tunnel

## Radiator features

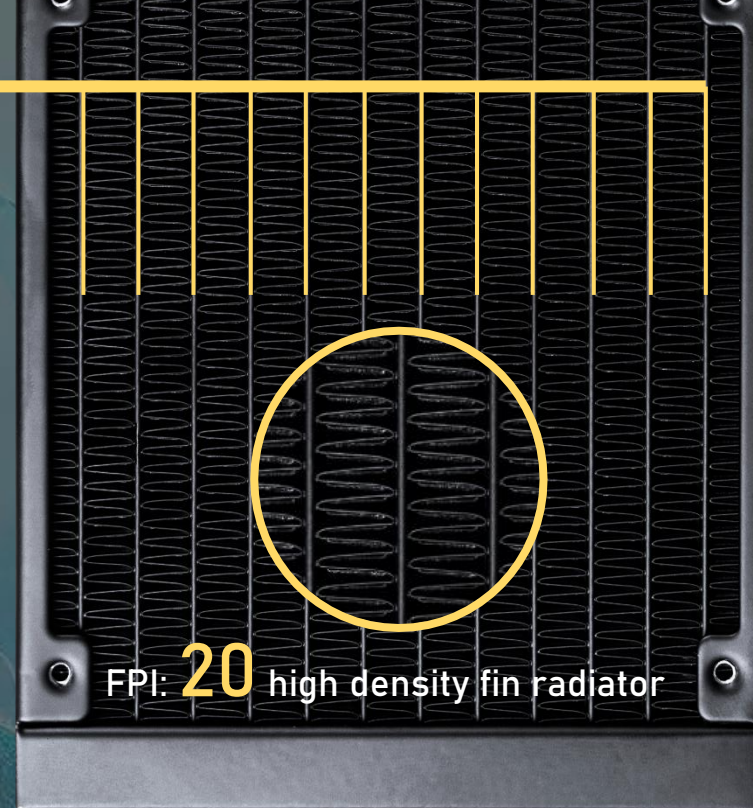
25% higher cooling fin height While maintaining standard radiator thickness

	CPU Max	CPU Average	MAX Speed	Average Speed
Cooling Fin :20	84	67	5486.6	4398.3
Cooling Fin :16	89	70	5287.1	4393.4

High Density Radiator: The BitFenix Cube AIO sports a high density radiator with a FPI: of 20 which connects to 12 tubes for better heat dissipation.  
Heightened Radiator Fins: Heat dissipation fins raised from 16mm to 20mm increases the cooling efficiency while maintaining the same dimensions.

The average temperature of using thick radiator get 3 °C lower than the thin one.

The max temperature of using thick radiator get 5 °C lower than the thin one.



CUBE

Other brand



# 240mm

# 360mm

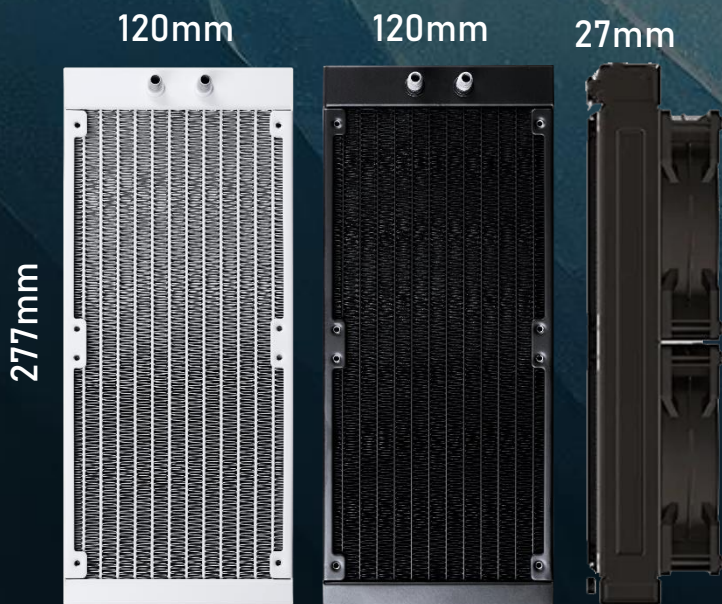
## Water Block & RADIATOR

### 240 Radiator specifications

Dimensions (H x W x D), (mm)	277 x 120 x 27
Radiator material / finish	aluminum / black or white spray painted
Base material / finish	copper / nickel plating

### 360 Radiator specifications

Dimensions (H x W x D), (mm)	397 x 120 x 27
Radiator material / finish	aluminum / black or white spray painted
Base material / finish	copper / nickel plating



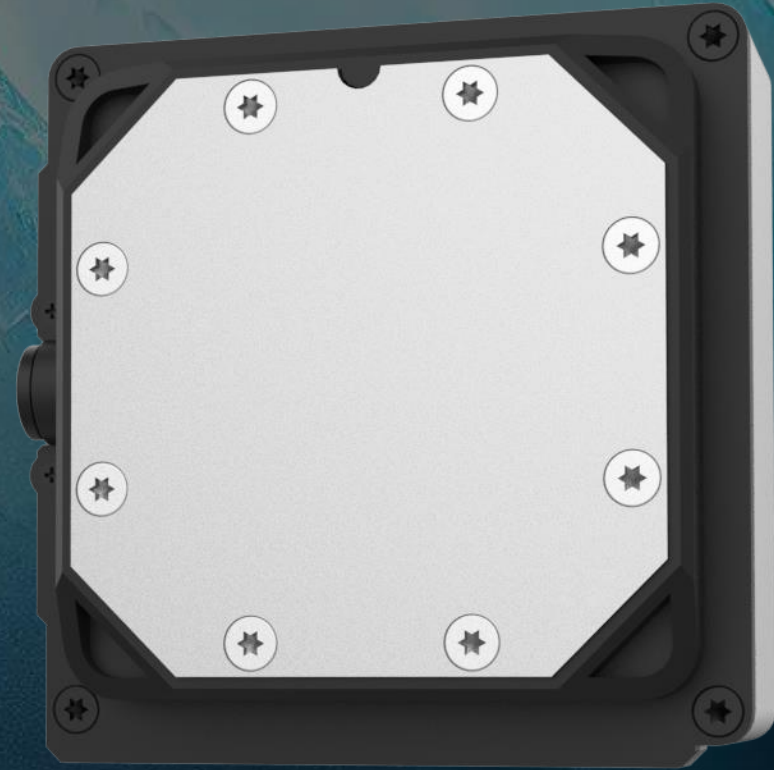
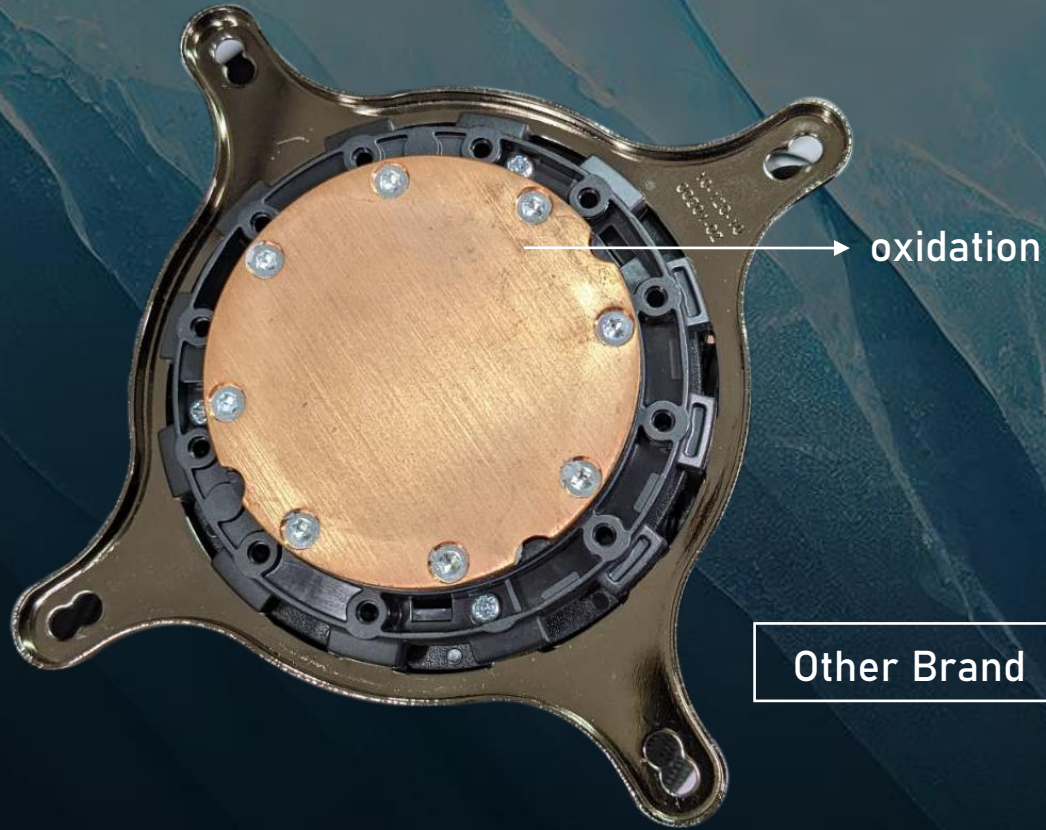
# BLACK

# WHITE

# Copper Base

CUBE AIO features a copper base with mirror-finished anti-corrosive nickel plating.

The specialized plating technique of the copper base accelerates heat dissipation and extends the product's durability.



**CUBE**



# Thermal Paste - BITFENIX TF10 EXTREME

Our products are quipped with BITFENIX TF10 EXTREME thermal paste

- \* 13.8 W / m.k's extremely high heat transfer capacity to meet the needs of the highest end users
- \* No curing time means that the radiator will maintain the epic peak capacity once it is installed.
  - \* Long life means long-term trouble-free use
  - \* Not conductive means no need to worry about a short circuit

## Specifications

Thermal Conductivity (W / m-k)	13.8
Color	Gray
Thermal Impedance (°C-cm2/W)	<0.01
Specific Gravity (25°C)	2.7
Useable Temperature Range	-220°C / + 300°C
Electrically Conductive	No
Harmless	Yes



# Newly Designed High Pressure Fan

Newly designed high pressure fan together with the specially designed radiator, BitFenix also launched a brand new fan design.

This newly designed seven-leaf fan has a CFM and DB that are not inferior to anyone, and **the wind pressure generated outside is as high as 3.0MM-H2O**. The high-pressure fan is used to penetrate the radiator with high-density and heightened heat dissipation fins. With the no noise design in 0dB mode, the whole AIO system can better meet the low noise level needs of the user.

Fan model	ARGB 120mm PWM high- pressure Fan
Fan dimensions (mm)	120 x 120 x 25
Speed @ 100% PWM (rpm)	2000 ±10% RPM
Bearing technology	Hydraulic Bearing
Rated Voltage (V)	12 Start voltage(V) ≤5V (Power ON/OFF)
Rated current (A)	0.19A / LED:0.30A
Power consumption (W)	2.28W
Connector	4-pin PWM
Max. air flow	60CFM
Air Pressure	3.0MM-H2O Noise 34.0dB-ARGB Fan
Extension Cble length (mm)	400+200
Power Extension Cble length (mm)	400



120mm



# 360mm radiator

CPU	13900KF
MB	ROG STRIX Z790-E GAMING
RAM	GeIL EVO V DDR5 RGB Hardcore Gaming Memory
VGA	GeForce RTX™ 3090 GAMING X TRIO 24G
Test Software	Prime95 - Small FFTs- 20 minutes
Remark	Indoor temperature 24 degrees

Indoor temperature 24 degrees (±1 degrees)

Brand	CPU MAX	CPU Average	CPU Package MAX	CPU Package average
BitFenix CUBE	81.7	72.7	81.7	79.0
Galahad ii Trinity SL-INF 360	87	73.7	84.7	80.7
iCUE H150i ELITE CAPELLIX XT	83	76	82.7	81

# 240mm radiator

CPU	13900KF
MB	ROG STRIX Z790-E GAMING
RAM	GeIL EVO V DDR5 RGB Hardcore Gaming Memory
VGA	GeForce RTX™ 3090 GAMING X TRIO 24G
Test Software	Prime95 - Small FFTs- 20 minutes
Remark	Indoor temperature 24 degrees

Indoor temperature 24 degrees (±1 degrees)

Brand	CPU MAX	CPU Average	CPU Package MAX	CPU Package average
BitFenix CUBE	82.3	74.3	82.0	80.0
Galahad ii Trinity SL-INF 360	83.3	73.7	83.7	81.0
iCUE H150i ELITE CAPELLIX XT	86.7	79.0	87.3	84.3

	240mm	360mm
Cube - White	BFW-AIO-240-WW27A-RP	BFW-AIO-360-WW27A-RP
Cube - Black	BFW-AIO-240-BB27A-RP	BFW-AIO-360-BB27A-RP

Model	240mm	360mm
color box dimension(mm)	321 X 240 X 140	461 X 206 X 138
color box weight(KG)	1.94	2.34
carton dimension ( mm )	685 X 296 X 508	476 X 430 X 305
units per carton	8	4
carton net weight(KG)	15.52	9.36
carton gross weight(KG)	17.09	10.65
pallet dimension	W 1200 X D 1000 X H 115 mm	
Carton per pallet	24 (6 X 4)	36 (6 X 6)
units per pallet	144	144
full pallet Dimension	1254 X 1000 X 1644 H	1294 X 1000 X 1960 H
actual pallet Dimension	1274 X 1000 X 1670 H	1294 X 1000 X 2035 H
Weight of pallet(exclude)	307.62	383.4
<b>cuft</b>	<b>3.49</b>	<b>2.2</b>