



S7

ALL-IN-ONE LIQUID COOLER WITH ARGB FANS



BITFENIX S7

Meet the S7: Where Performance Meets Style.

As the newest member of BitFenix's legendary 4th-generation liquid cooling family, the S7 is built for gamers who demand more. With its sleek **Segment LCD Screen**, you can keep a close eye on your system's vitals in real-time. Level up your build's look with the S7's vibrant ARGB water block and custom high-performance fans—fully customizable to match your personal style. Why choose between power and looks? The S7 delivers flagship-level cooling and premium aesthetics at a price that makes sense.



Support Motherboard-Brand Lighting Synchronization: Asus/Gigabyte/MSI/ASRock/BioStar...and other brands can support.

INTRODUCING WATER BLOCK CONNECTOR CABLES



ARGB Header

Connects to the motherboard's ARGB 3-pin socket



PUMP Header

Connects to the motherboard's pump/fan/extension cable Y-header



FAN Header


Connected to the CPU FAN connector on the motherboard



Monitor Header

Connects to the motherboard's USB 2.0 socket

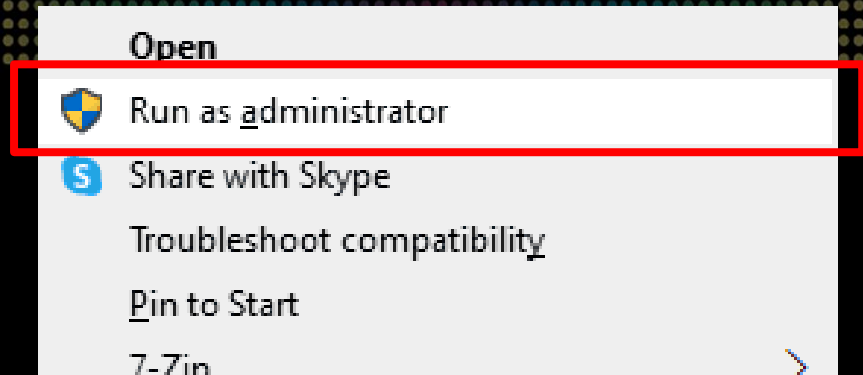
SEGMENT LCD SCREEN INTRODUCTION



CPU Temperature — 038°
CPU Utilization — 010

BITFENIX S7

SEGMENT DISPLAY AIO SOFTWARE



Welcome to the PC Monitor software installation.
Please follow these guidelines for a smooth setup:

Administrator Rights: The software must be installed using **Administrator mode**.

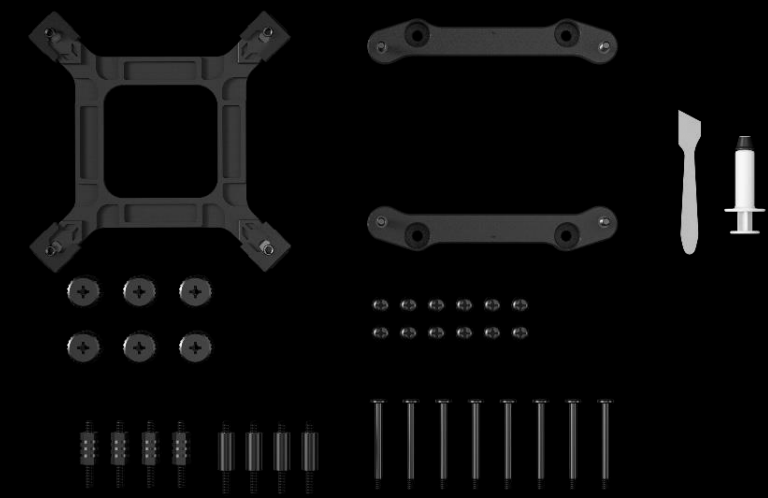
Clean Installation: If you have an older version installed, please uninstall it first and manually delete the original installation folder before proceeding.

Installation Path: We recommend using the default directory. Please ensure the installation path consists only of English characters.

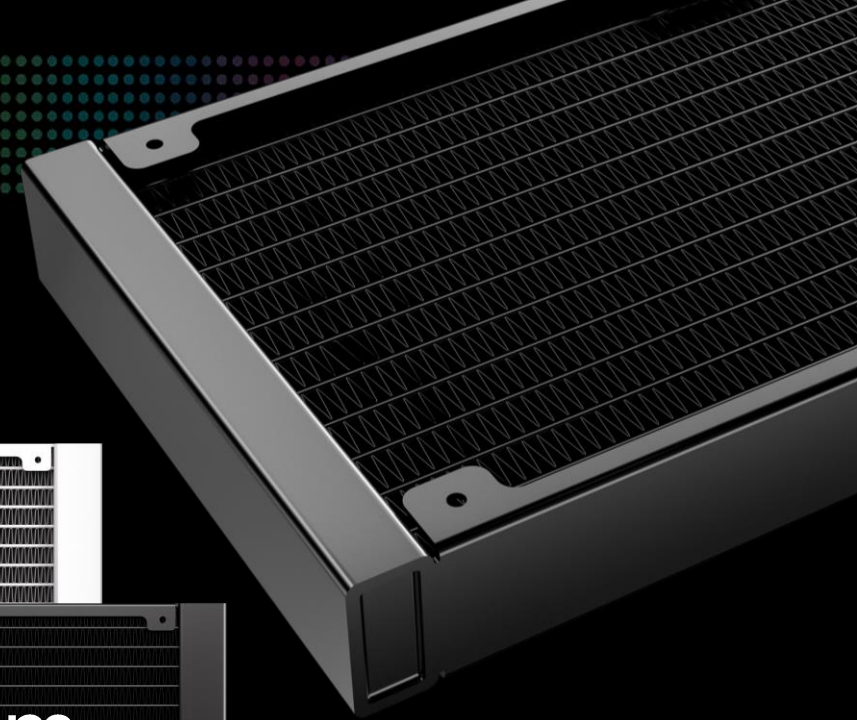
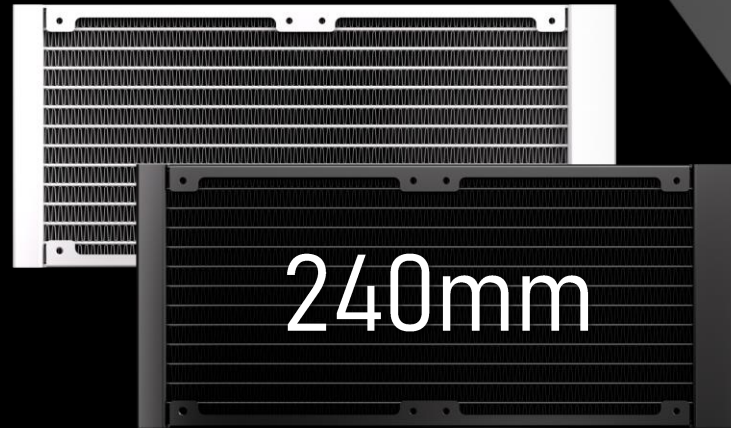
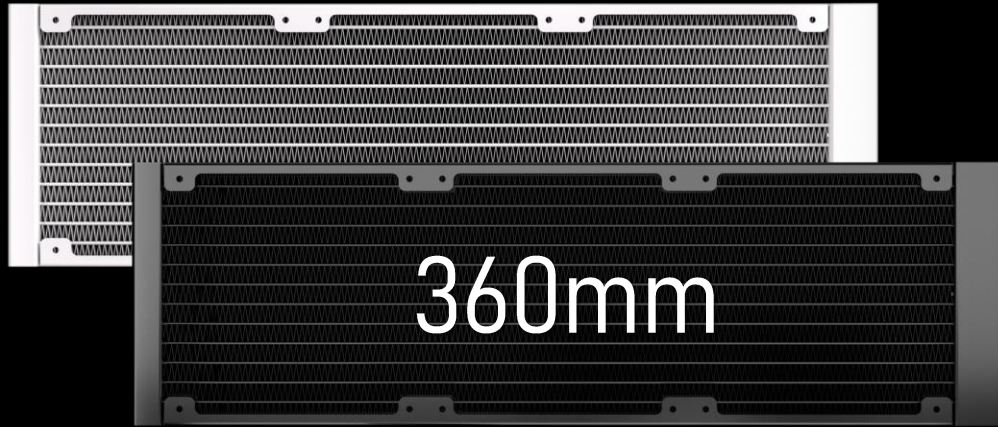


THIRD GENERATION PUMP

In order to match the latest top-level CPUs, we have developed a brand new pump based on the popular pump architecture. It has the ultimate specifications of **3000 RPM**



Socket compatibility	Intel: 1851 / 1700 / 1200 / 1150 / 1151 / 1155 AMD: AM5 / AM4
Pump speed (rpm)	3000 ±10 rpm
Pump adjustable	9V - 12V
Pump connector	12V-4Pin PWM
Tube length (mm)	400 mm
Noise level	≤30dB(A)



360 Radiator specifications	
Dimensions (H x W x D), (mm)	397 x 120 x 27
Radiator material / finish	aluminum / black or white spray painted
Base material	copper

240 Radiator specifications	
Dimensions (H x W x D), (mm)	277 x 120 x 27
Radiator material / finish	aluminum / black or white spray painted
Base material	copper

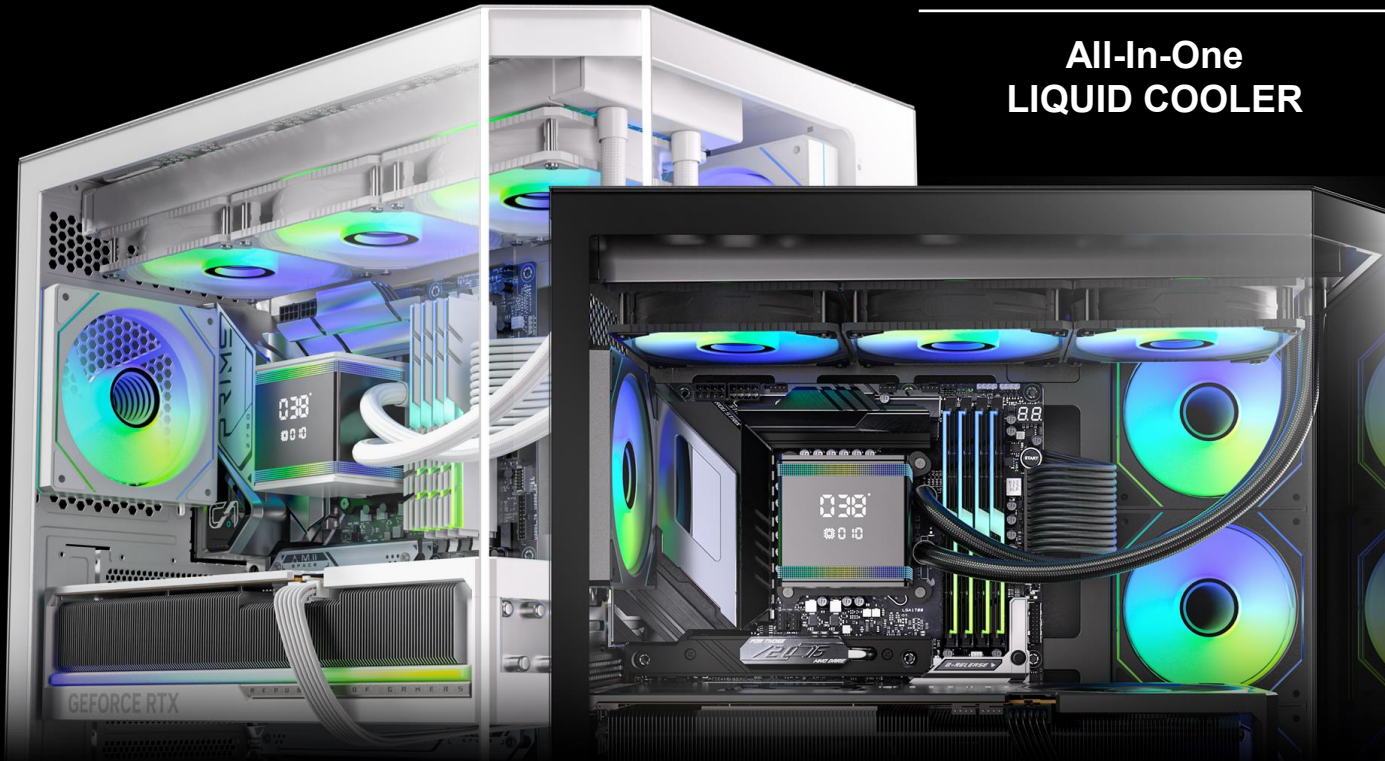


FAN SPEC

Fan model	ARGB 120mm PWM high-pressure Fan
Fan dimensions (mm)	120 x 120 x 25
Speed @ 100% PWM (rpm)	800-2000 \pm 10% RPM
Bearing technology	Hydraulic Bearing
Rated Voltage (V)	12V
Start Voltage (V)	\leq 5V(Power ON/OFF)
Power consumption (W)	3W
Connector	4-pin PWM
Max. air flow	59.1CFM
Air Pressure	1.73MM-H2O
Noise	\leq 30 dB

S7

All-In-One
LIQUID COOLER



S7 Black

Part Number	BFW-S7-360-KK27A-RP
EAN / UPC	4716779449969 / 886027007440

S7 White

Part Number	BFW-S7-360-WW27A-RP
EAN / UPC	4716779449976 / 886027010297

