



S12

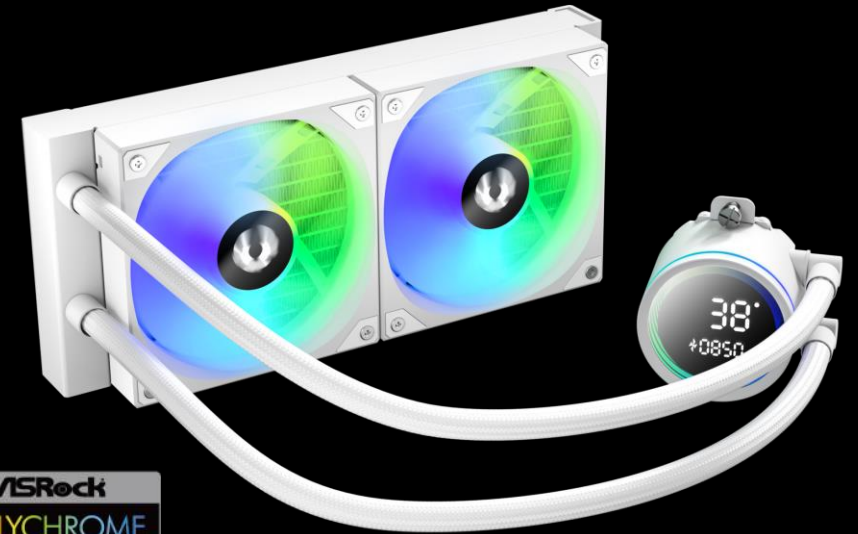
ALL-IN-ONE LIQUID COOLER WITH ARGB FANS



BITFENIX S12

Elevate your build with the BitFenix S12. This 4th Gen AIO cooler doesn't just boast superior pump efficiency—it features a custom fan designed to deliver a massive 82.8 CFM airflow and 2.6 mmH₂O pressure at a quiet 1600 RPM.

The S12's pump head merges a mesmerizing Infinity Mirror with a Segment LCD, putting vital temperature and RPM right in your line of sight. For gamers seeking the perfect balance of bold lighting and silent performance, the S12 Series stands unrivaled.



Support Motherboard-Brand Lighting Synchronization: Asus/Gigabyte/MSI/ASRock/Biostar...and other brands can support.

INTRODUCING WATER BLOCK CONNECTOR CABLES



ARGB Header

Connects to the motherboard's ARGB 3-pin socket



PUMP Header

Connects to the motherboard's pump/fan/extension cable Y-header



FAN Header

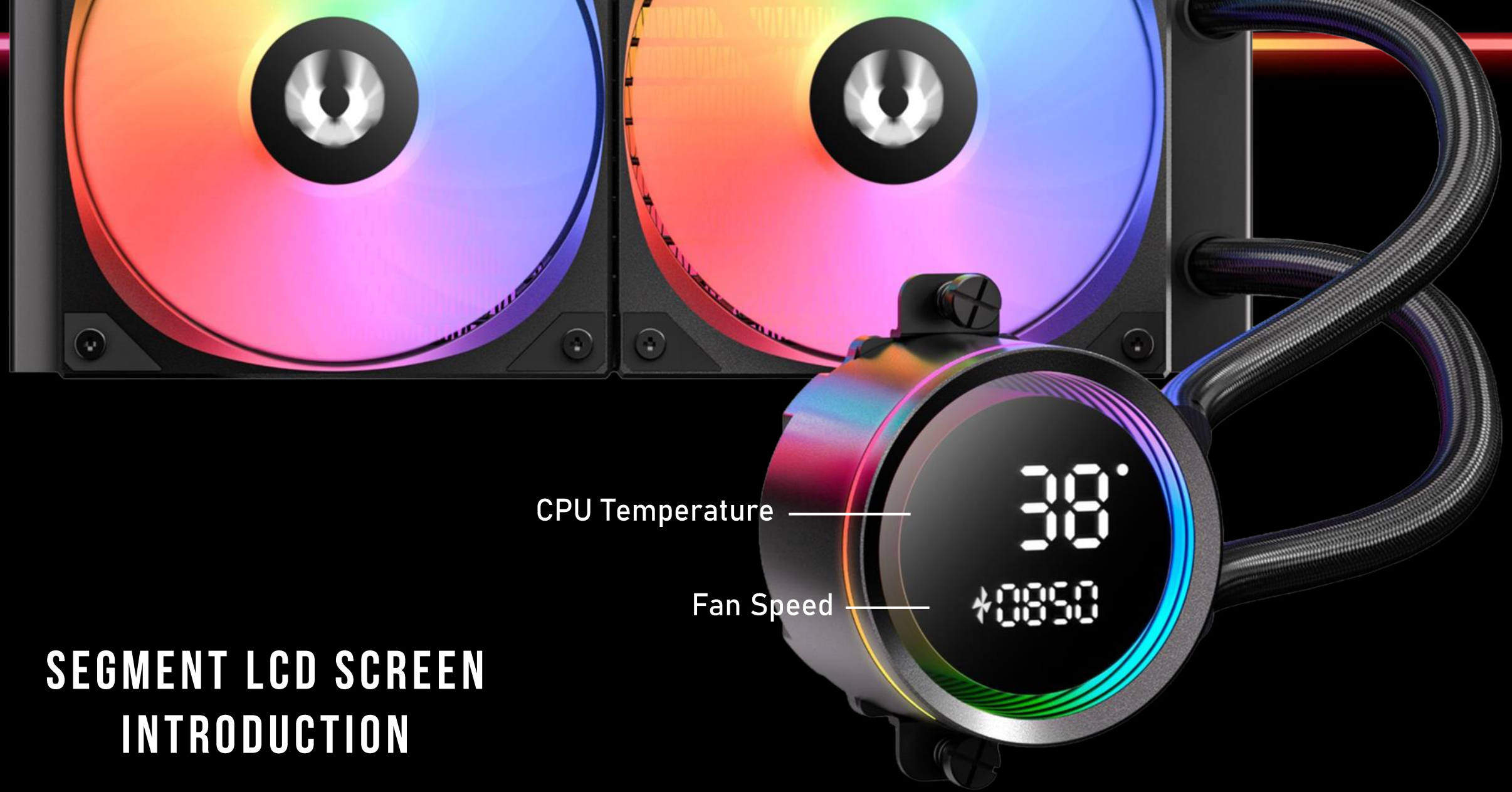
Connected to the CPU FAN connector on the motherboard



Monitor Header

Connects to the motherboard's USB 2.0 socket





CPU Temperature ———

Fan Speed ———

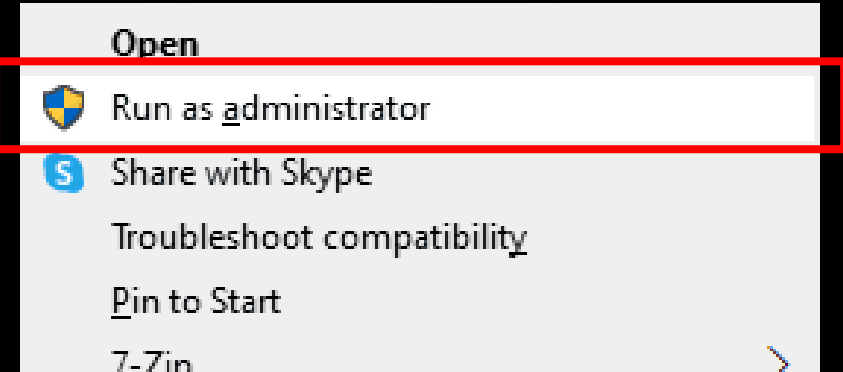
33°

10850

SEGMENT LCD SCREEN INTRODUCTION

BITFENIX S12

SEGMENT DISPLAY AIO SOFTWARE



Welcome to the PC Monitor software installation.
Please follow these guidelines for a smooth setup:

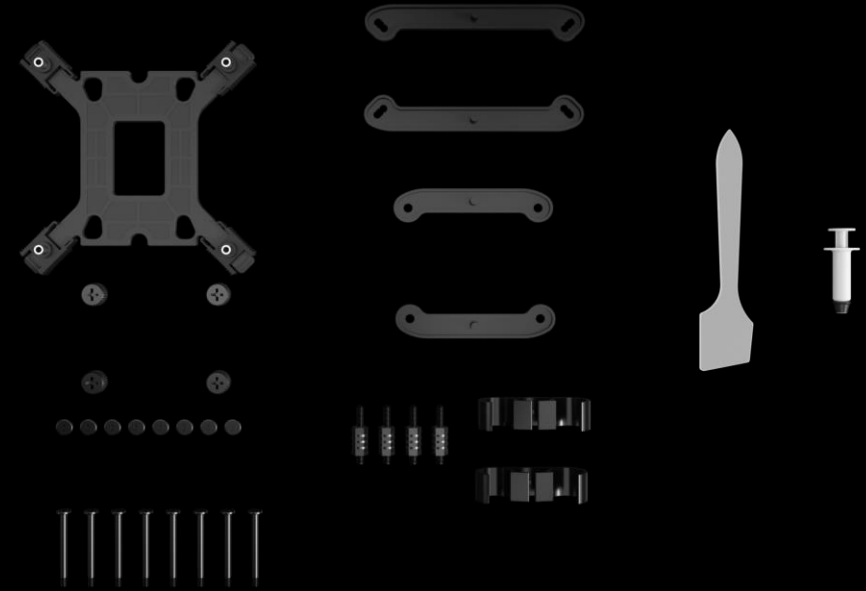
Administrator Rights: The software must be installed using **Administrator mode**.

Clean Installation: If you have an older version installed, please **uninstall** it first and manually delete the **original installation folder** before proceeding.

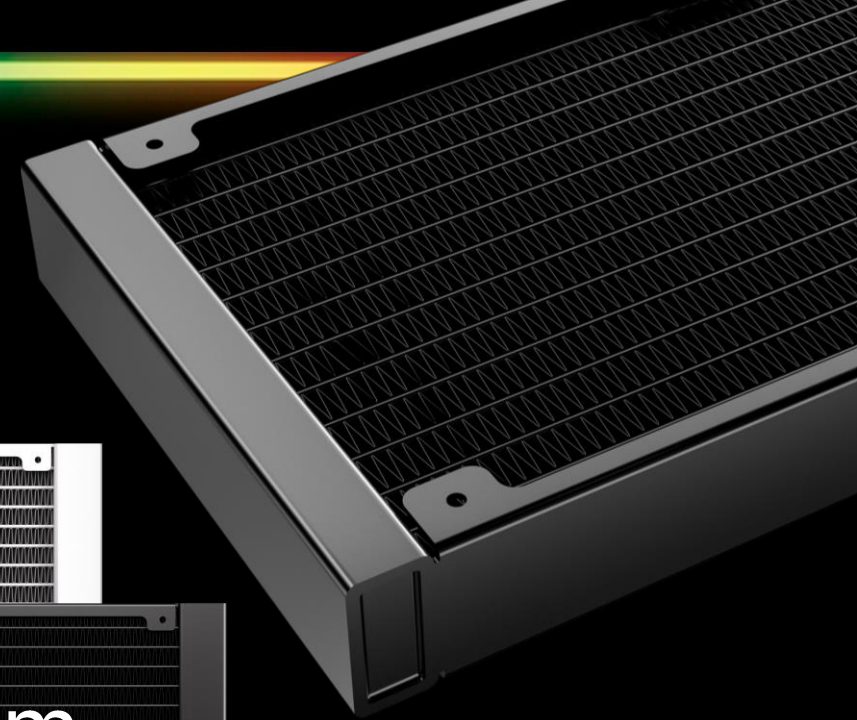
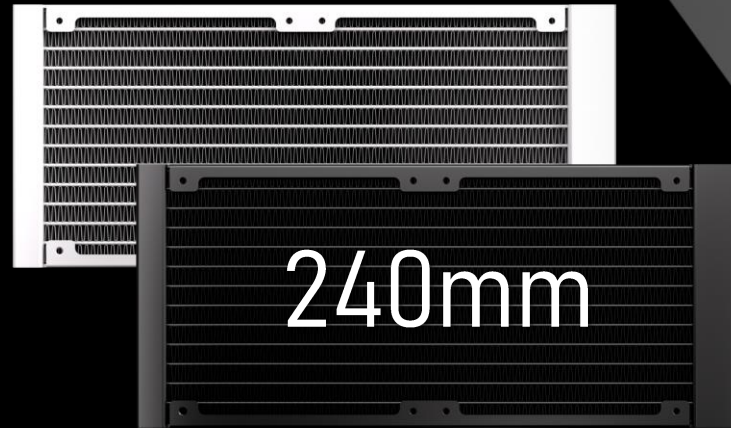
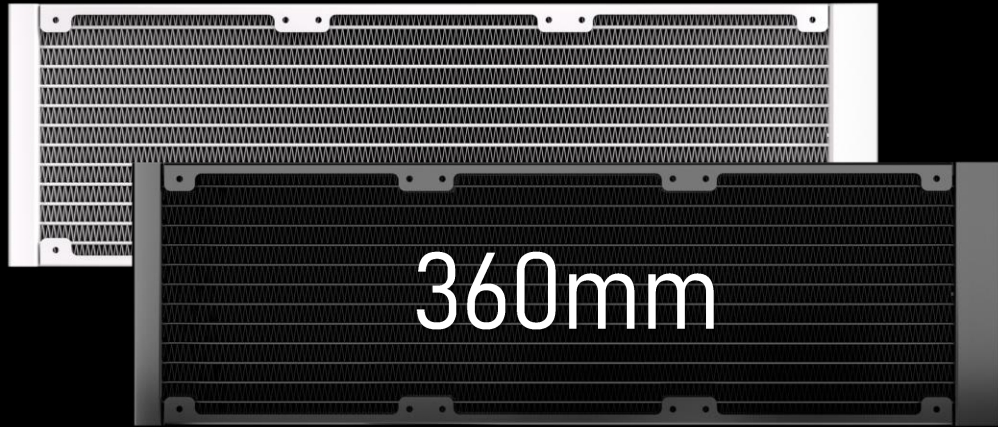
Installation Path: We recommend using the **default directory**. Please ensure the installation path consists only of **English characters**.

THIRD GENERATION PUMP

In order to match the latest top-level CPUs, we have developed a brand new pump based on the popular pump architecture. It has the ultimate specifications of **3000 RPM**



| | |
|----------------------|--|
| Socket compatibility | Intel: 1851 / 1700 / 1200 / 1150 / 1151 / 1155 AMD: AM5 / AM4 |
| Pump speed (rpm) | 3000 ±10 rpm |
| Pump adjustable | 9V - 12V |
| Pump connector | 12V-4Pin PWM |
| Tube length (mm) | 400 mm |
| Noise level | ≤30dB(A) |



360 Radiator specifications

| | |
|-------------------------------------|---|
| Dimensions (H x W x D), (mm) | 397 x 120 x 27 |
| Radiator material / finish | aluminum / black or white spray painted |
| Base material | copper |

240 Radiator specifications

| | |
|-------------------------------------|---|
| Dimensions (H x W x D), (mm) | 277 x 120 x 27 |
| Radiator material / finish | aluminum / black or white spray painted |
| Base material | copper |



FAN SPEC

| | |
|-------------------------------|----------------------------------|
| Fan model | ARGB 120mm PWM high-pressure Fan |
| Fan dimensions (mm) | 120 x 120 x 25 |
| Speed @ 100% PWM (rpm) | 800-1600 \pm 10% RPM |
| Bearing technology | Hydraulic Bearing |
| Rated Voltage (V) | 12V |
| Start Voltage (V) | \leq 5V(Power ON/OFF) |
| Power consumption (W) | 3W |
| Connector | 4-pin PWM |
| Max. air flow | 82.8CFM |
| Air Pressure | 2.6MM-H2O |
| Noise | \leq 29 dB |

S12

All-In-One
LIQUID COOLER



S12 Black

Part Number

BFW-S12-240-KK27A-RP

EAN / UPC

4716779449983 / 886027013021

S12 White

Part Number

BFW-S12-240-WW27A-RP

EAN / UPC

4716779449990 / 886027007457