

NOVA MESH



The BitFenix NOVA MESH is the rebirth of the popular BitFenix NOVA with re-engineered designs and features to offer the best balance of performance, looks and ease of use. NOVA MESH represents not only BitFenix's long standing theme of simple elegance, but also the dedication towards offering a well rounded PC chassis. The core of the NOVA MESH is its clean design, well balanced between a perfectly organized interior structure and the sleek exterior design. It is further complemented by features that enhance the ease of installation and use such as the user friendly installation, removable high density mesh dust filters and dual chamber design.



Sleek Design With Mesh Front Panel

BitFenix NOVA MESH is an all-rounder offering great airflow coupled with modern elegant design which makes it an ideal choice for most user scenarios. With clean interior, optimized airflow and extensive compatibility, the NOVA MESH offers a great balance in performance and looks in it's class. It is specifically design with ease of use in mind with easy installation and maintenance features.



Clean Interior With 23mm Cable Management Space Behind Motherboard Tray

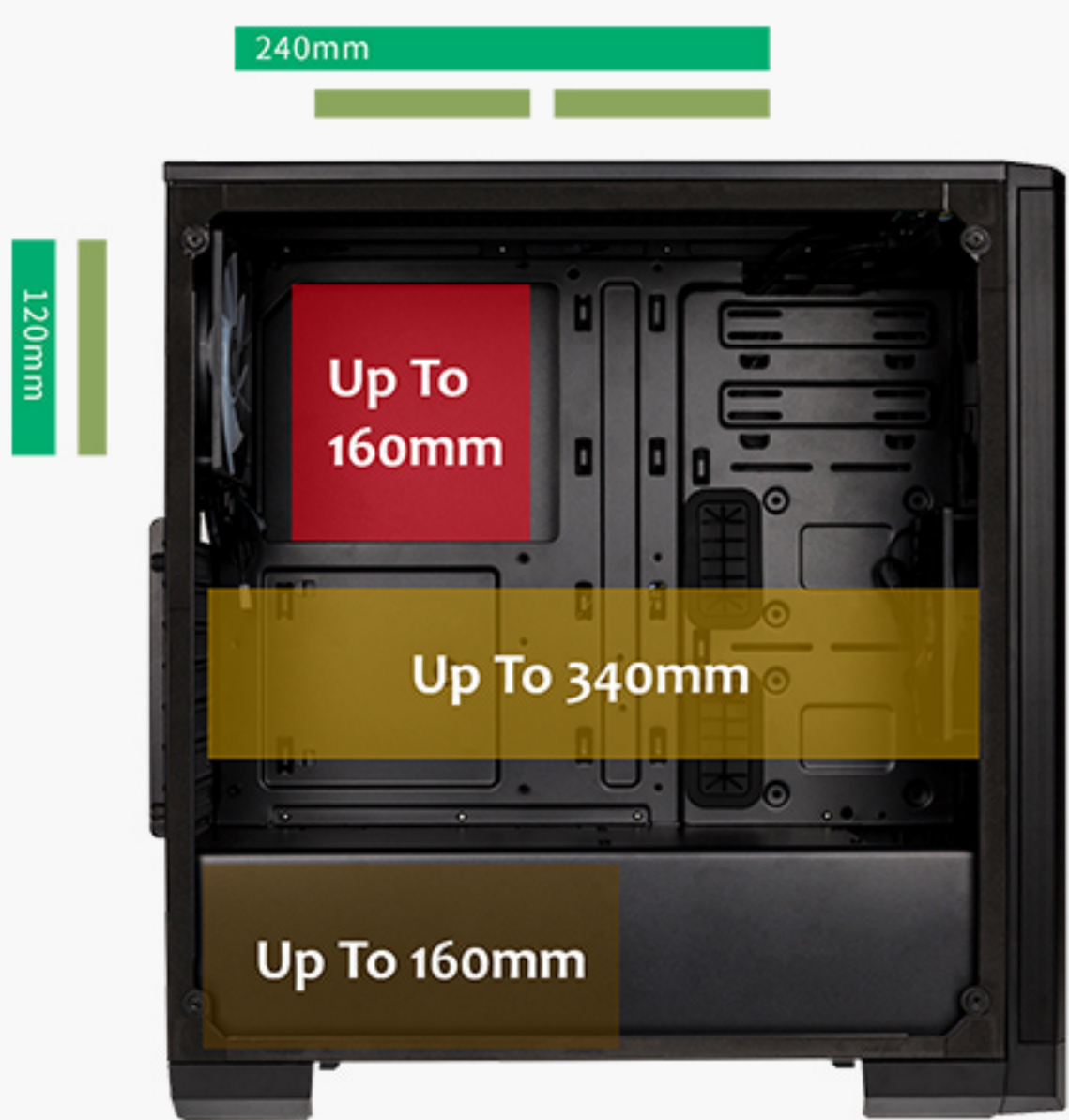
The NOVA MESH comes with a PSU shroud hiding the PSU and up to two HDDs beneath it, while three SSDs can be attached to the back of the motherboard tray, showing only the motherboard, graphics cards and the cooling solution through the tempered glass panel. The 23mm cable management space behind motherboard tray makes it an easy job to manage the cables clean. With the drive-trays out of the way, the NOVA MESH provides plenty of space for graphics cards with a length up to 340mm.



Thermal Capability

Optimized airflow is essential for good performance and extended lifetime of components. The all the BitFenix NOVA MESH TG offer the best airflow with a dust filtered mesh at the front which support up to 360mm Radiator* and 3x 120mm fans*. The top 240mm exhaust and the rear 120mm exhaust maintains a good balance of air intake and exhaust.

* Please refer to Product Specifications for full compatibility



360/280/240/120mm

	Radiator
	120mm Fan
	140mm Fan
	Air Cooler Height Support
	VGA Length Support
	Power Supply



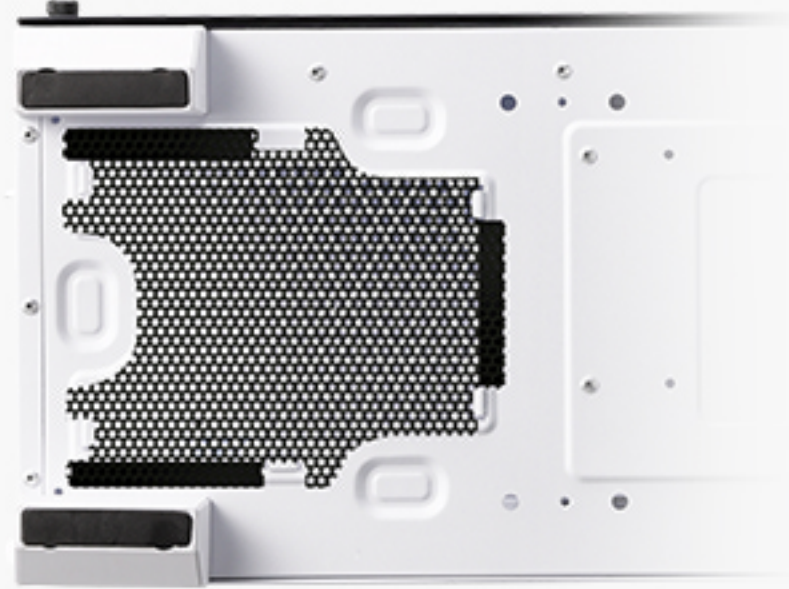
Functional Design

NOVA MESH doesn't compromise the sleek design of Mesh front panel. The high density mesh used in the NOVA MESH has over ten thousand holes for easy airflow and dust filtering with magnetic removable function for easy removal. The clean interior design not only makes sure unrestricted airflow but also focused airflow to the GPUs for effective cooling performance. The close and clean PSU shroud keeps NOVA MESH to have two individual chambers. This allows to optimally cool each component individually to offer more efficient thermal performance. The solid steel side panels of the NOVA MESH makes sure the fan noise of the system is significantly reduced even when it is running at full load.



Easy Clean With Removable Dust Filters

NOVA MESH TG is designed to offer reliable performance for years to come. By filtering out dust particle which reduces system lifespan, systems built with NOVA MESH TG can boast of dust free operation. The improved air intake mesh on the front comes with an embedded nylon filter that prevents dust from entering the system while the filter at the bottom keeps PSU free from dust. The top exhaust is also equipped with a nylon filter to ensure versatility. All these filters can be easily removed for a faster cleaning job.



For further information, check below links.

[▶ Product Page](#)

[▶ Download Link](#)

Specification

NOVA MESH	
Part no.	BFC-NVM-300-KKXSK-RP (Black)
	BFC-NVM-300-WVXKW-RP (White)
Materials	Steel, Mesh, Plastic
Dimensions(W x H x D)	206 x 460 x 437mm
Motherboard Supports	Mini-ITX, Micro-ATX, ATX, E-ATX up to 272mm
E-ATX Motherboard Supports	305mm x 272mm
Air Cooler Height Support	160mm
VGA Length Support	340mm
Cable Management Support	up to 23mm
5.25" Drive Bay	0
3.5" Drive Bay	2
2.5" Drive Bay	3+2
Fan mounts	Front 3 x 120mm or 2 x 140mm
	Top 2 x 120mm
	Rear 1 x 120mm
Included Cooling Fan	Front 1 x 120mm Black Fan
Radiator Support	Front 240mm x 1/ 280mm x 1/ 360mm x 1 (Thickness up to 35mm/ width up to 141mm)
	Top 240mm x 1 (Thickness up to 27mm/ width up to 125mm)
	Rear 120mm x 1
PCI-E Slots	7 Slots
I/O Ports	2 x USB 3.0, Audio I/O
Power Supply	ATX & Standard / up to 160mm

- High Density Mesh Design
- Dust Filter at Front and Top
- Magnets PSU Dust Filter
- 120mm silent Spectre fan included (Black Fan x 1)
- Support VGA Length up to 340mm
- Dual USB 3.0 front I/O

Contact Umberto Marino - Marketing Division Email umberto@bitfenix.com

2019 BITFENIX Co.,Ltd.All Rights Reserved. All trademarks are registered to their respective owners.

