

ENSO MESH

— Quick Installation Guide —

Package Content:

- ➞ **ENSO Mesh Case**
- ➞ **ENSO Mesh Quick Installation Guide**
- ➞ **Accessory Pack**

3x Motherboard standoff-M3 #6-32 L3mm

8x 3.5"HDD screw-6#-32*5BM

4x HDD tray fasten screw-#6-32*L12MM

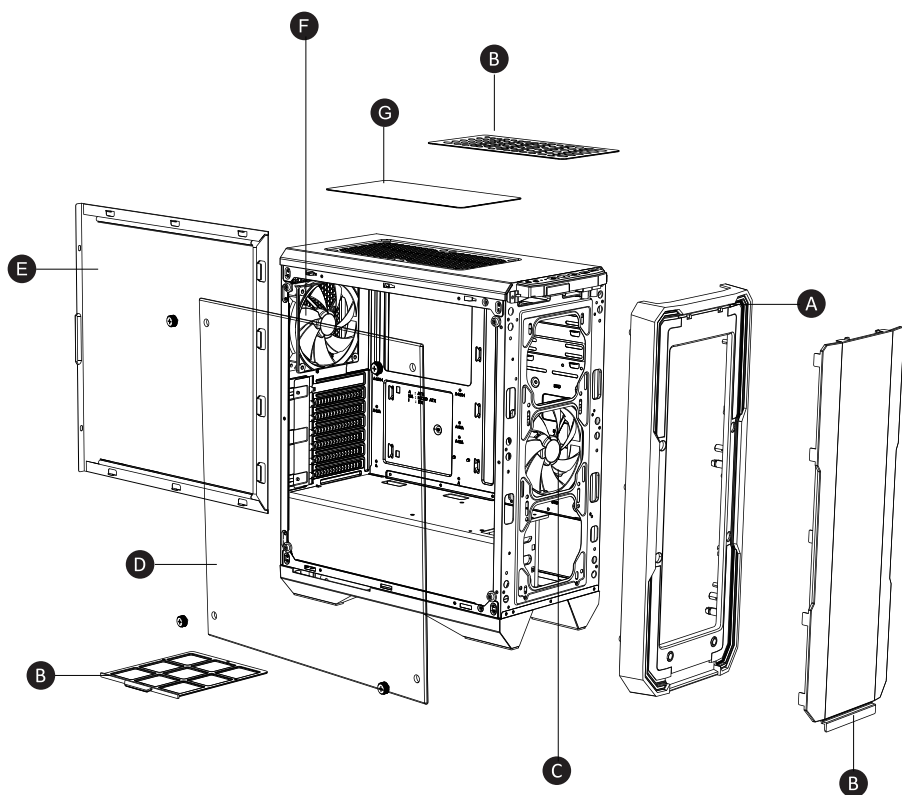
6x PSU Screw Hex-#6-32*5*7.5

22x Motherboard Standard Screw- PWM M3*5*7.5

6x Cable tie- 2.5mm x 150mm

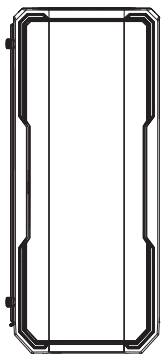
1x Speaker

1x Tempered Glass Standard Thumbscrews-#6-32*10

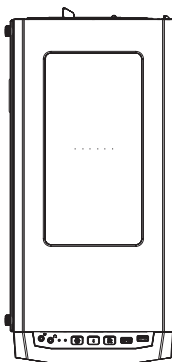


- | | |
|------------------------------------|-----------------------------|
| A Front Panel | E Side Panel |
| B Dust Filter | F Static RGB LED Fan |
| C Fan (120mm) | G Dust Cover |
| D Tempered Glass Side Panel | |

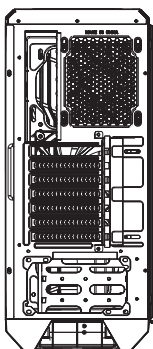
Front



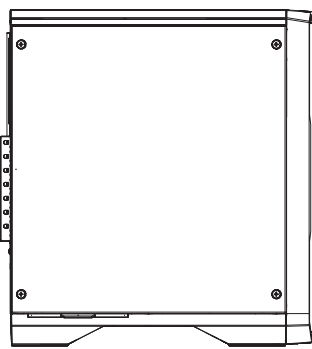
Top



Back

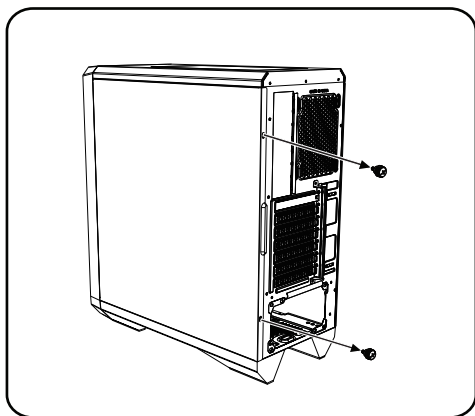


Side

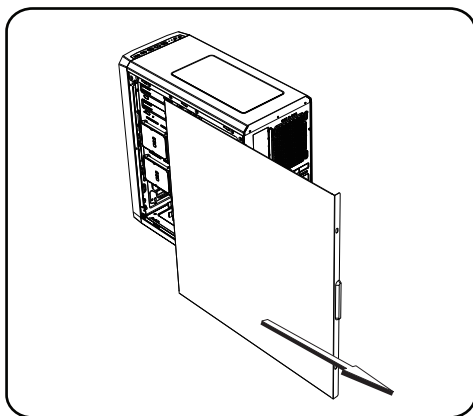


Basic Installation

How to remove the right side panel

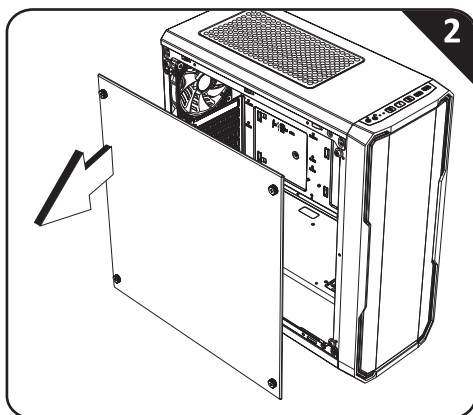
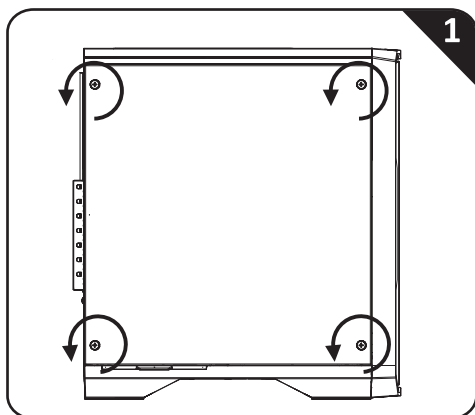


Remove both thumb screws

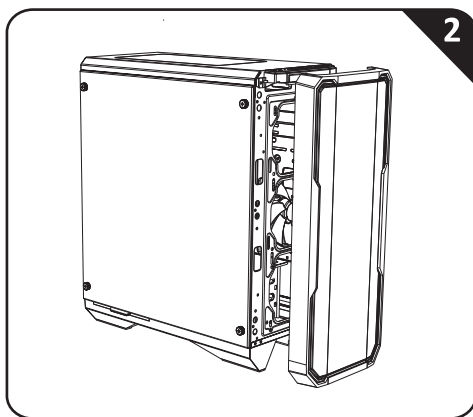
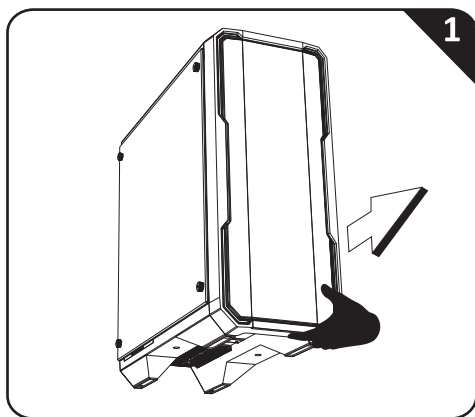


Slide the side panels towards the back of the case

How to remove the tempered glass side panel



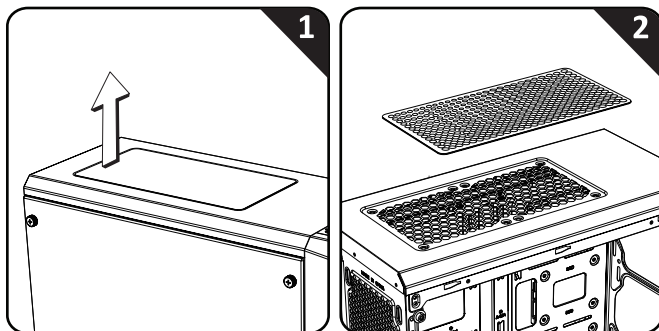
How to remove the front panel



How to remove the dust filters

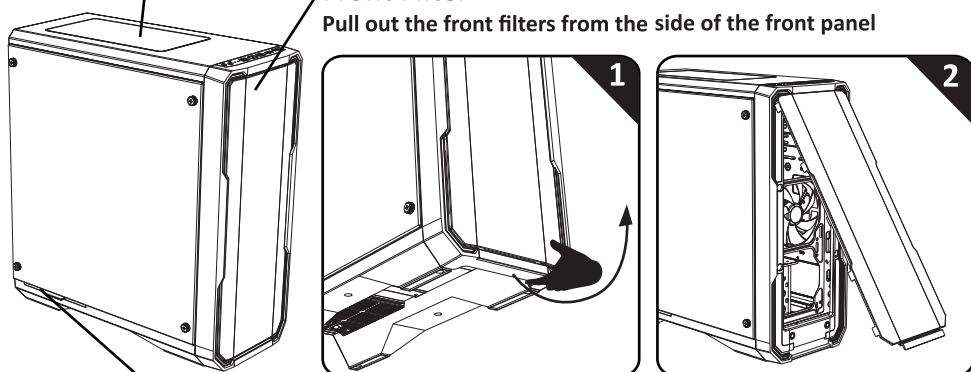
Top Filter

Pull off the magnetic dust filter



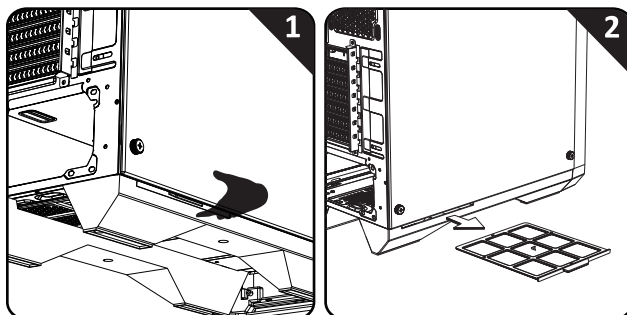
Front Filter

Pull out the front filters from the side of the front panel

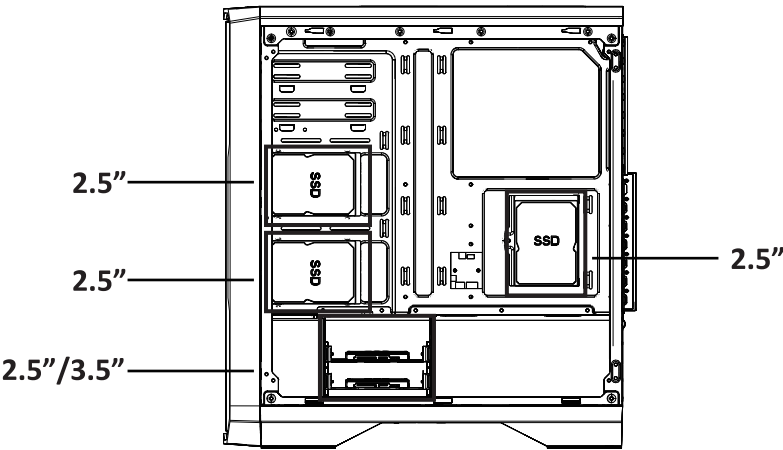


PSU Filter

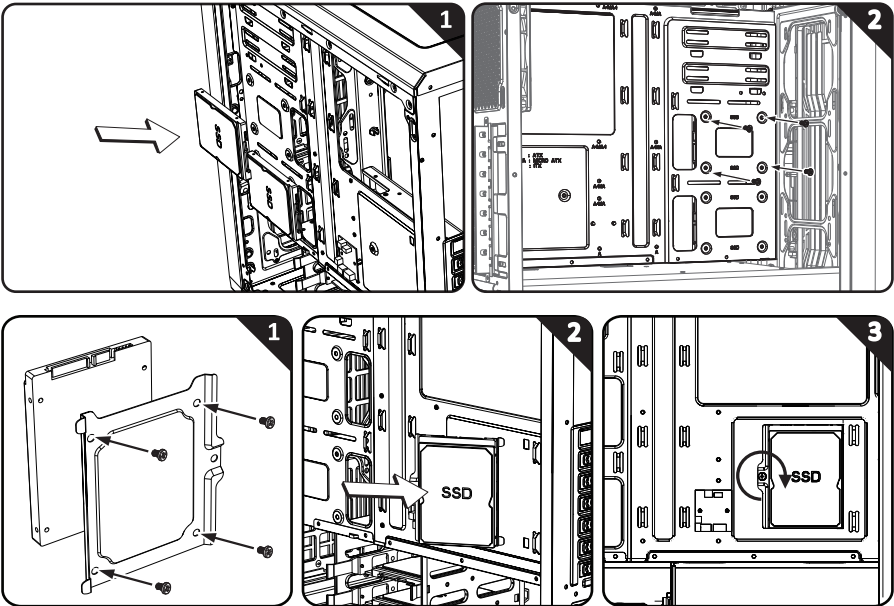
Pull out the PSU filter from the side of the feet



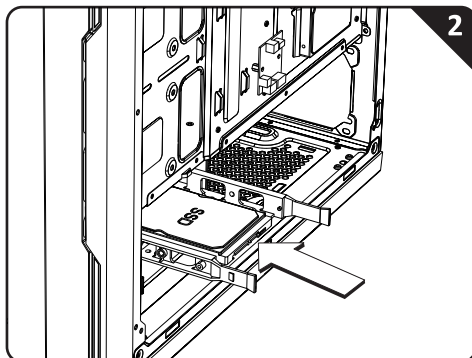
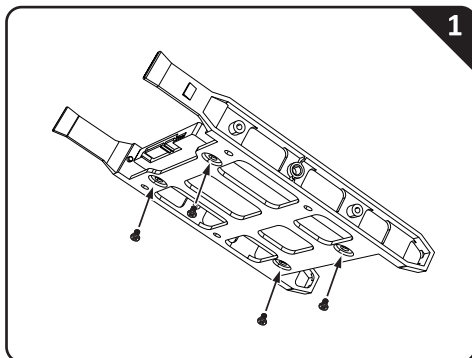
Drive Locations



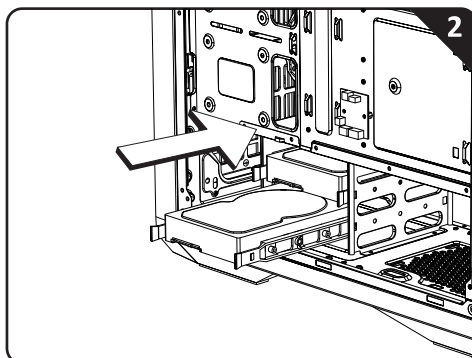
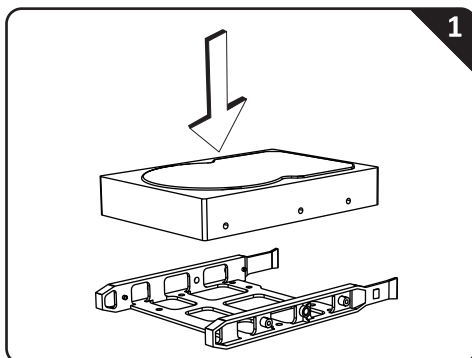
Installing 2.5" Drives



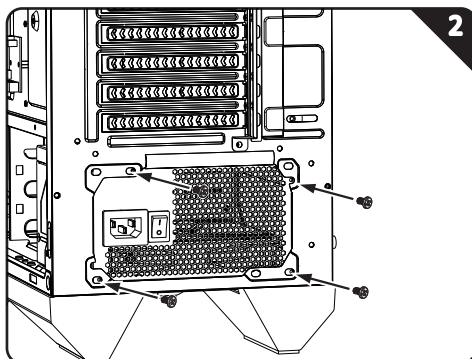
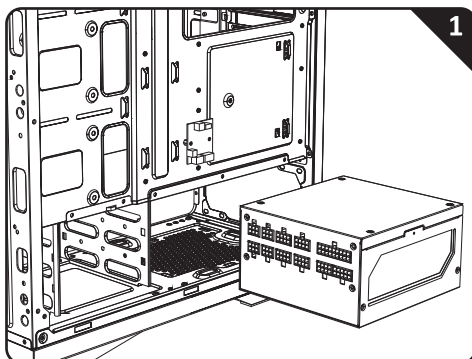
Installing 2.5" Drives



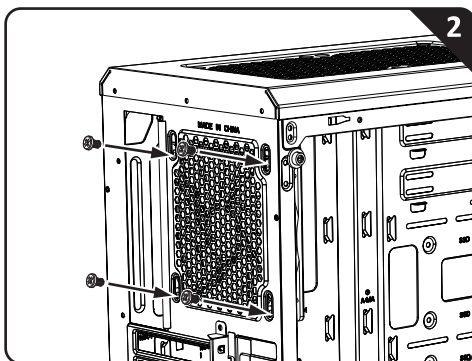
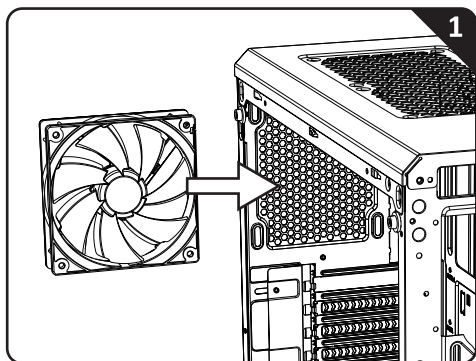
Installing 3.5" Drives



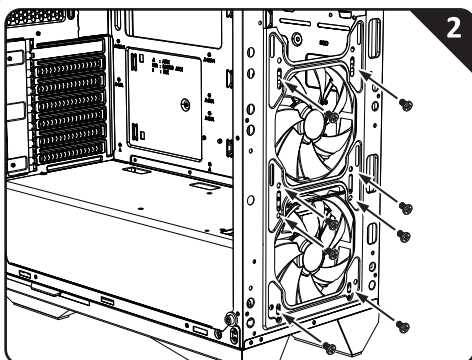
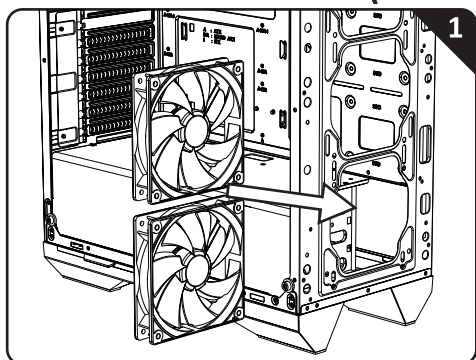
PSU Installation



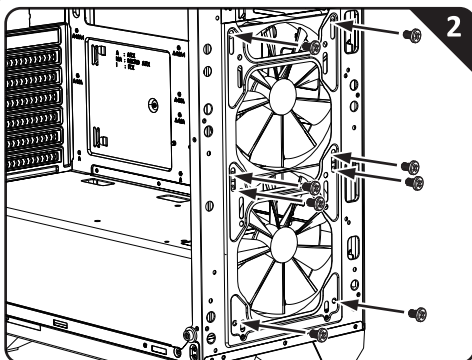
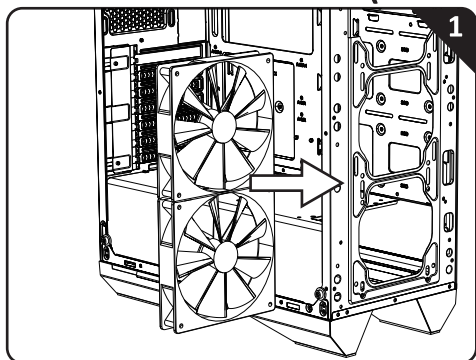
Back Fan Installation (120mm)



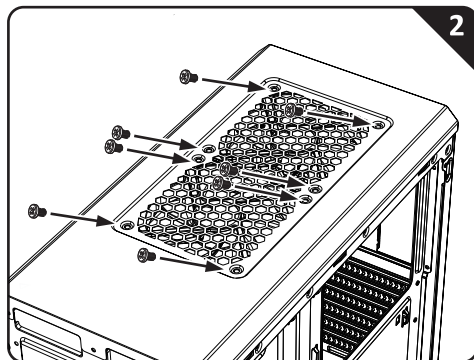
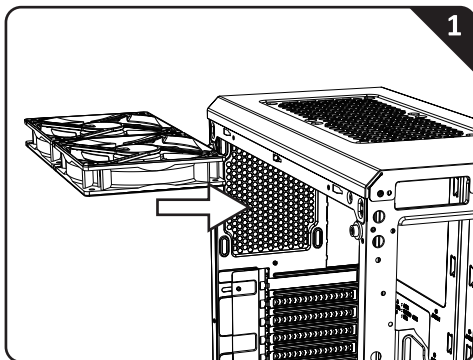
Front Fan Installation (120mm)



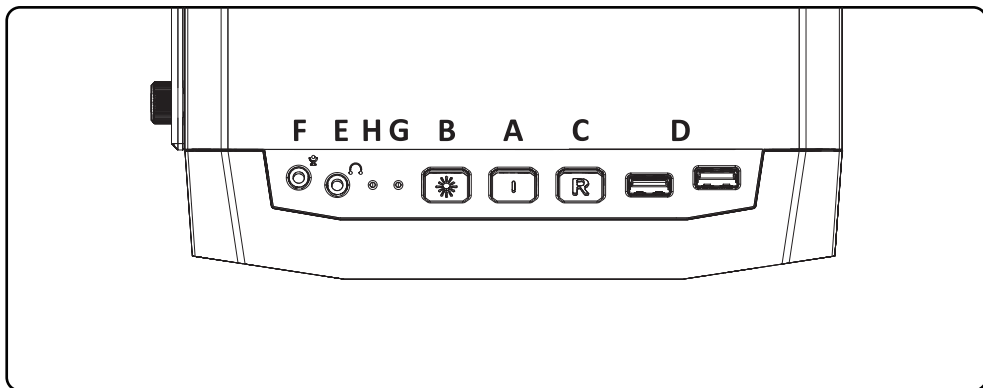
Front Fan Installation (140mm)



Top Fan Installation (120mm)



Control Panel



A. Power Button

E. Headphone Jack

B. LED Control Button

F. Microphone Jack

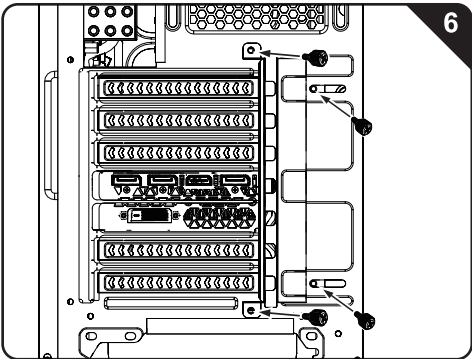
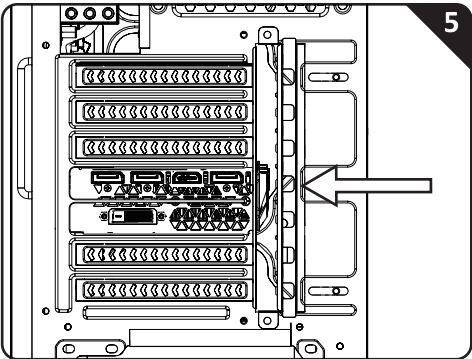
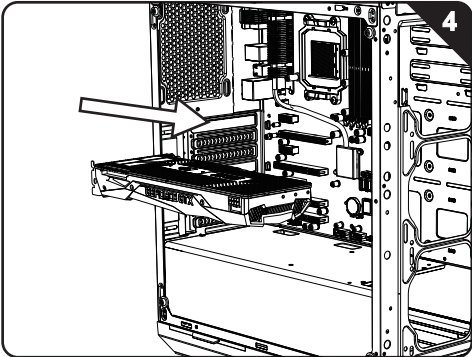
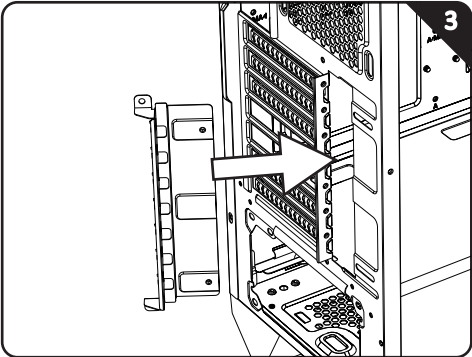
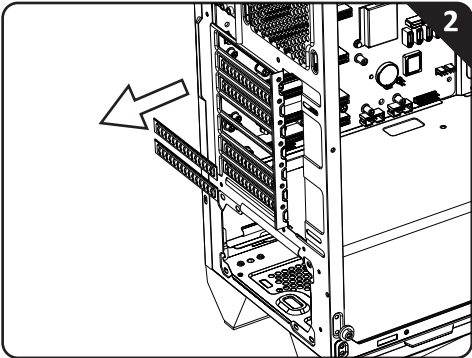
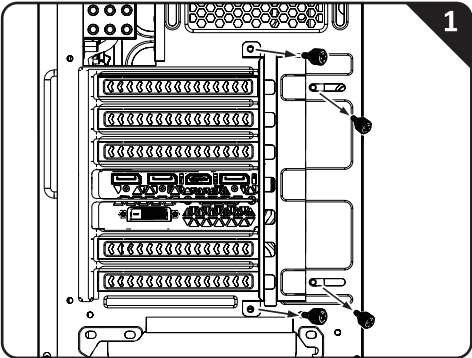
C. Reset Button

G. Power LED

D. USB3.0 Port

H. HDD LED

PCI-E Card Installation



BE INVINCIBLE

WWW.BITFENIX.COM



BitFenix Co., Ltd.

3F, No.79, Sec. 1, Xintai 5th Rd.,

bitfenix

Xi Zhi District, New Taipei City, Taiwan, R.O.C.

© 2018 BITFENIX Co., Ltd. All Rights Reserved. All trademarks are registered to their respective owners

For the most updated information, please visit our official website : <http://www.bitfenix.com> Ver 1.0 | 2018/11