

# ENSO MESH

— Quick Installation Guide —

## Package Content:

➞ ***Enso Mesh Case***

➞ ***Enso Mesh Quick Installation Guide***

➞ ***Accessory Box***

3x Motherboard standoff-M3 #6-32 L3mm

8x 3.5"HDD screw-6#-32\*5BM

4x HDD tray fasten screw-#6-32\*L12MM

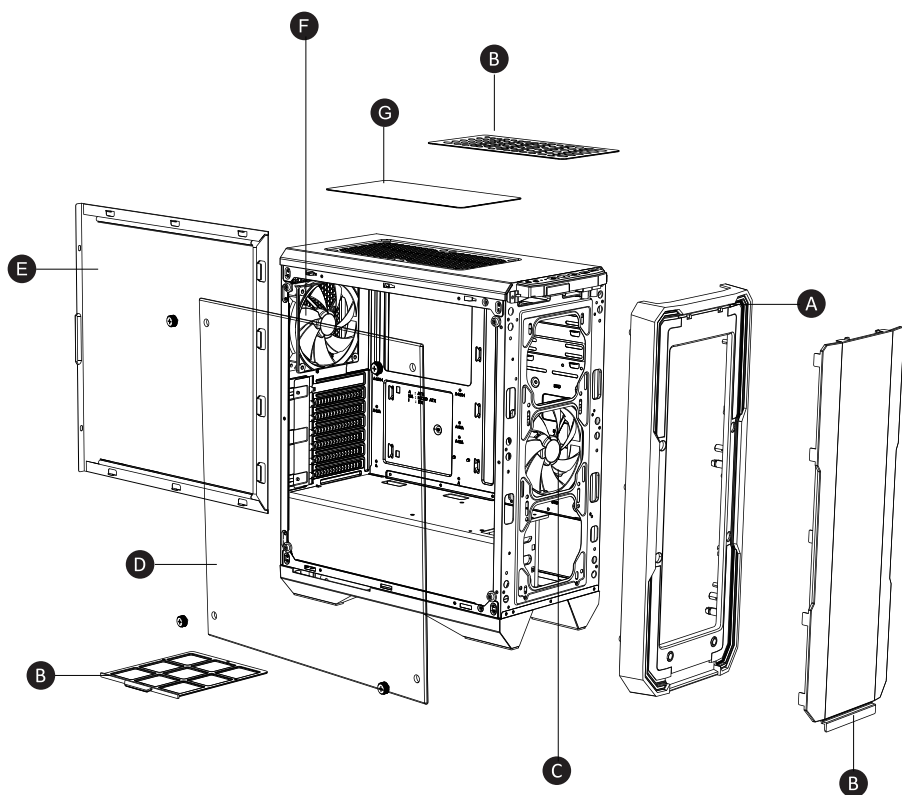
6x PSU Screw Hex-#6-32\*5\*7.5

22x Motherboard Standard Screw- PWM M3\*5\*7.5

6x Cable tie- 2.5mm x 150mm

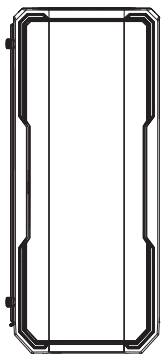
1x Speaker

1x Tempered Glass Standard Thumbscrews-#6-32\*10

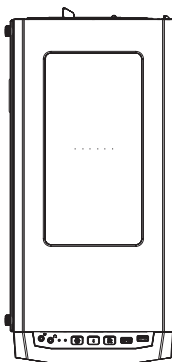


- |                                    |                             |
|------------------------------------|-----------------------------|
| <b>A</b> Front Panel               | <b>E</b> Side Panel         |
| <b>B</b> Dust Filter               | <b>F</b> Static RGB LED Fan |
| <b>C</b> Fan (120mm)               | <b>G</b> Dust Cover         |
| <b>D</b> Tempered Glass Side Panel |                             |

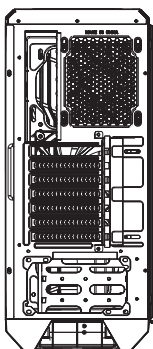
**Front**



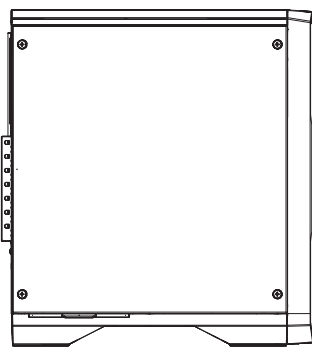
**Top**



**Back**

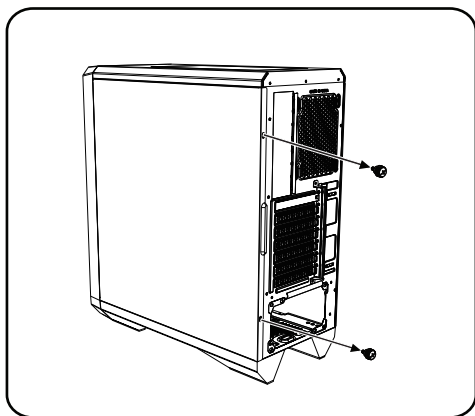


**Side**

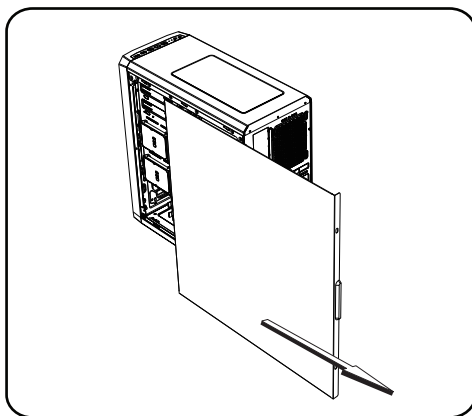


## Basic Installation

How to remove the right side panel



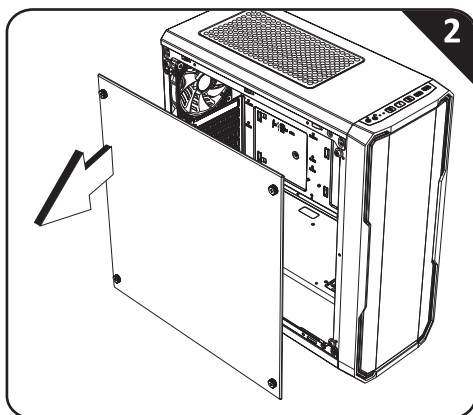
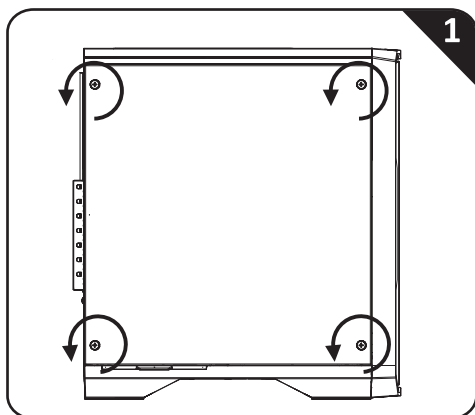
Remove both thumb screws



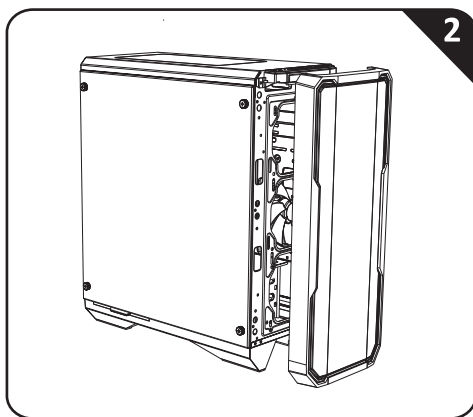
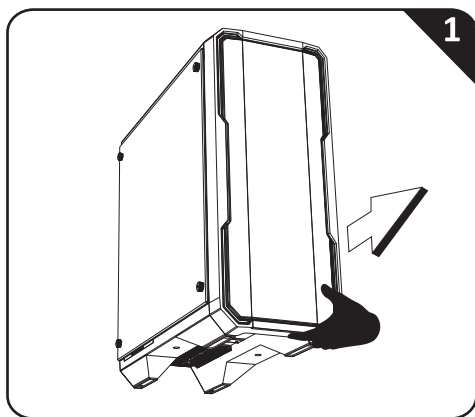
Slide the side panels towards the back of the case



## How to remove the tempered glass side panel



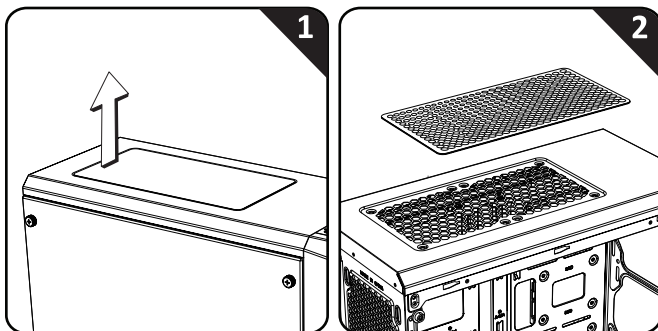
## How to remove the front panel



# How to remove the dust filters

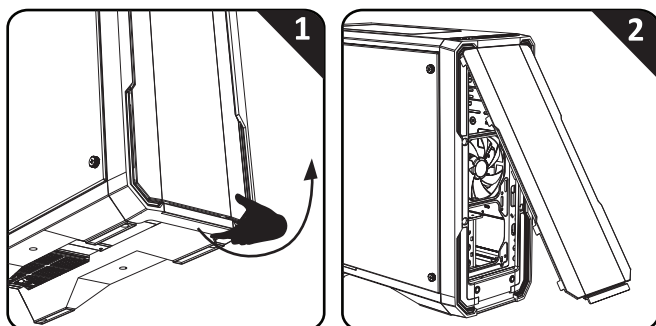
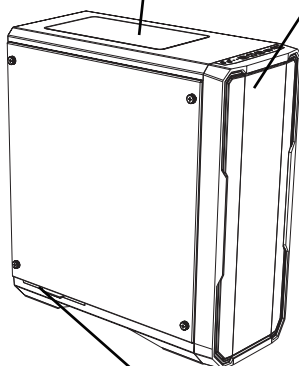
## Top Filter

Pull off the magnetic dust filter



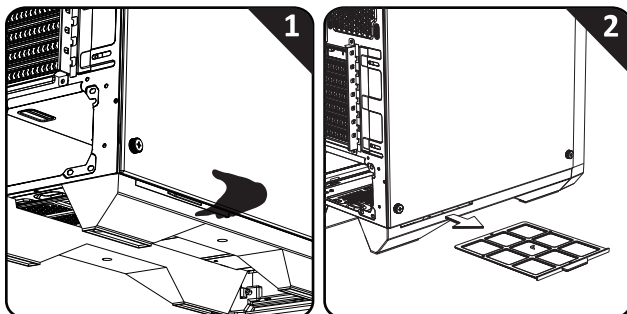
## Front Filter

Pull out the front filters from the side of the front panel

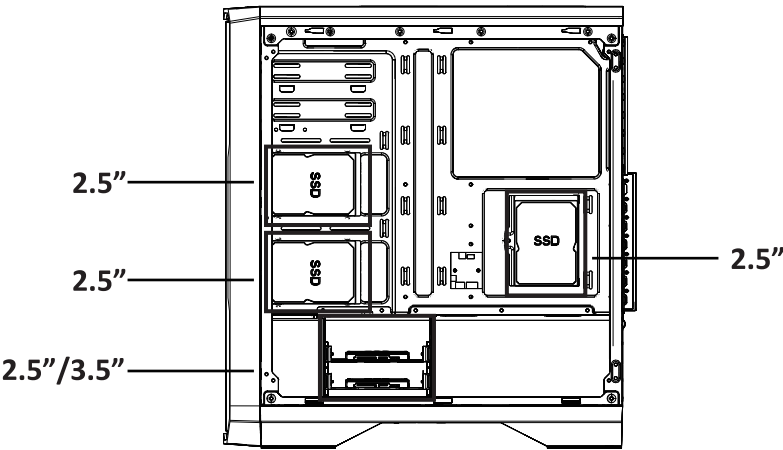


## PSU Filter

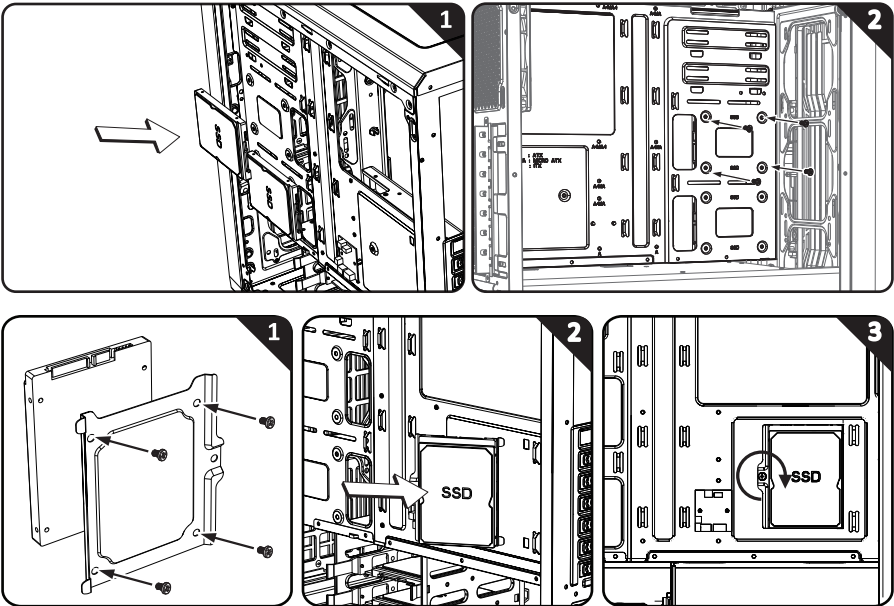
Pull out the PSU filter from the side of the feet



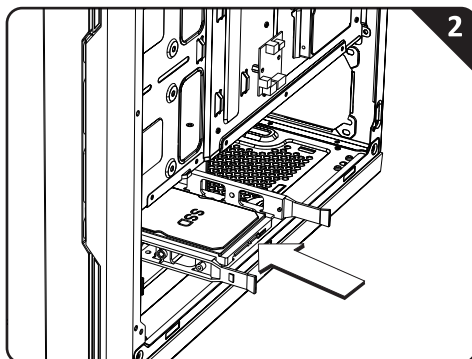
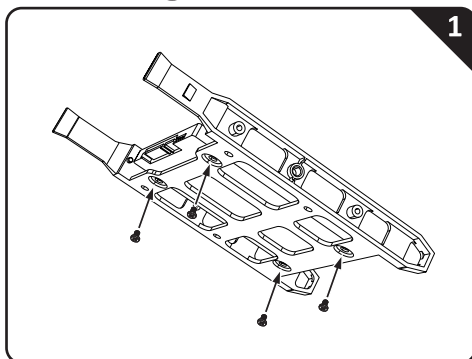
# Drive Locations



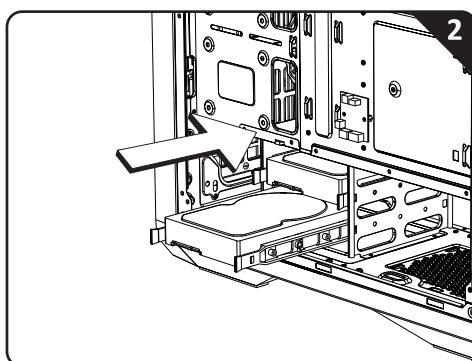
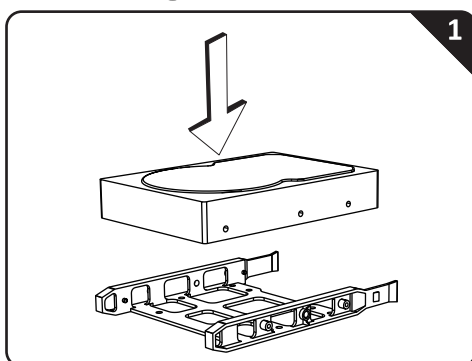
# Installing 2.5" Drives



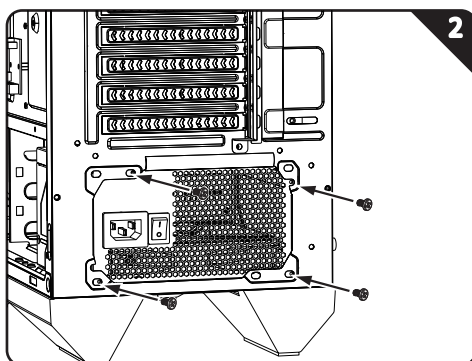
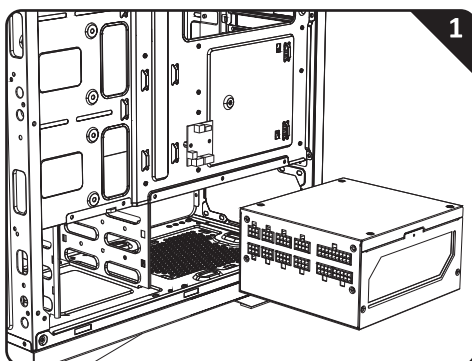
## Installing 2.5" Drives



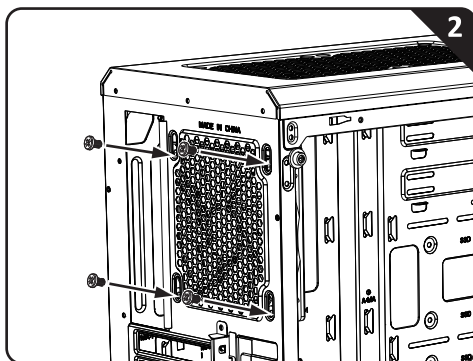
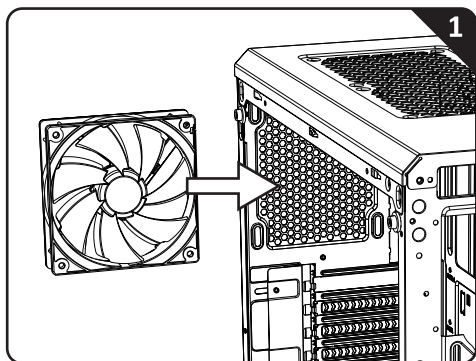
## Installing 3.5" Drives



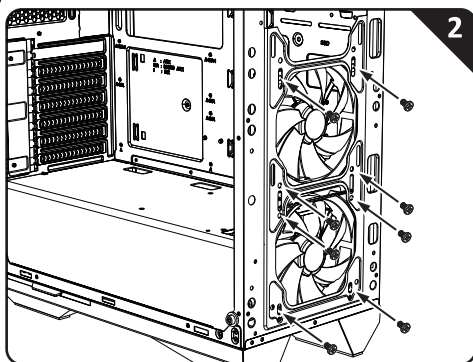
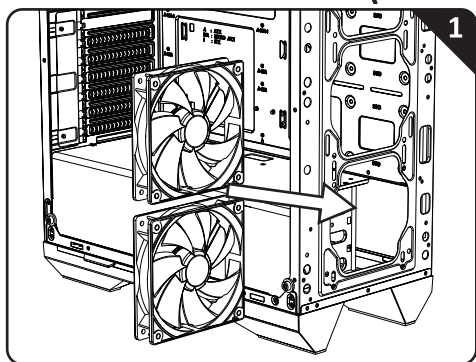
## PSU Installation



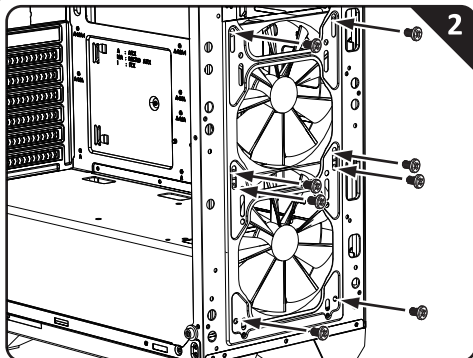
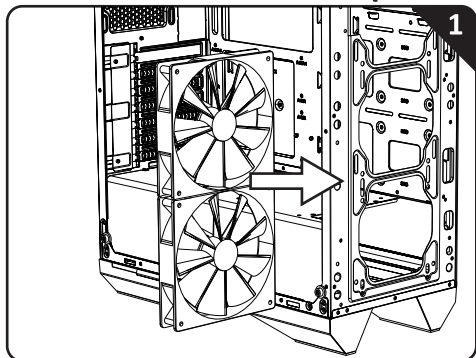
## Back Fan Installation (120mm)



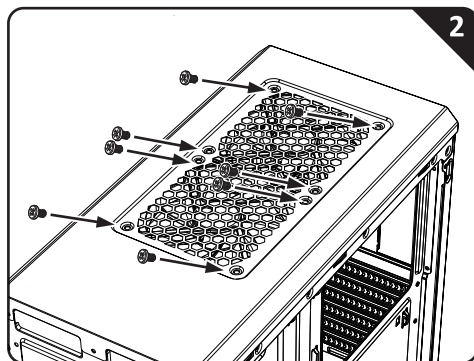
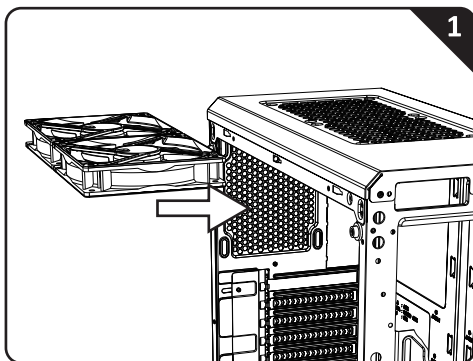
## Front Fan Installation (120mm)



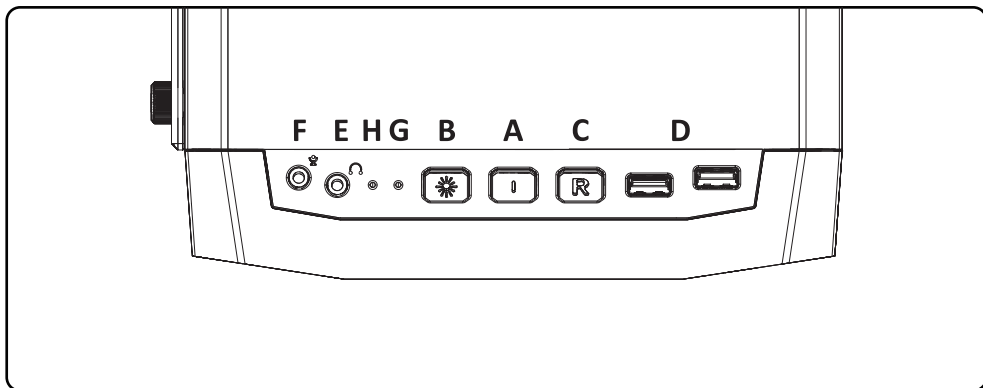
## Front Fan Installation (140mm)



## Top Fan Installation (120mm)



## Control Panel



A. Power Button

E. Headphone Jack

B. LED Control Button F. Microphone Jack

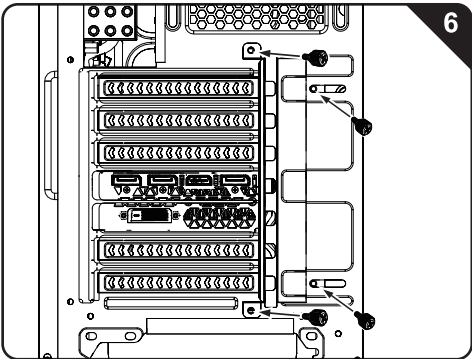
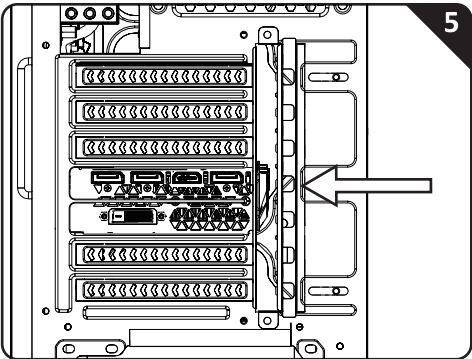
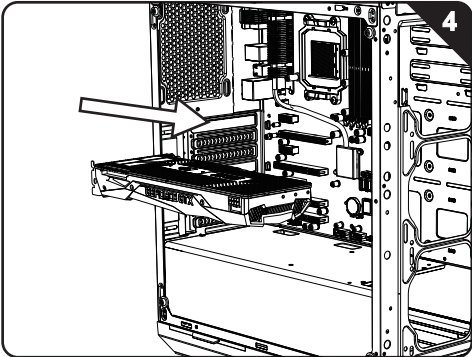
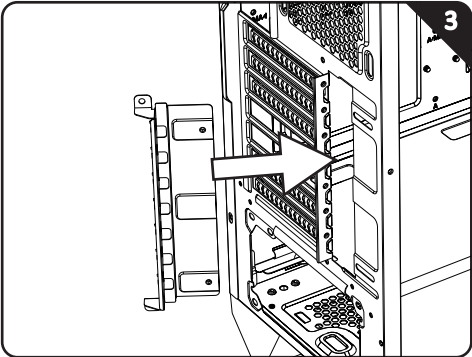
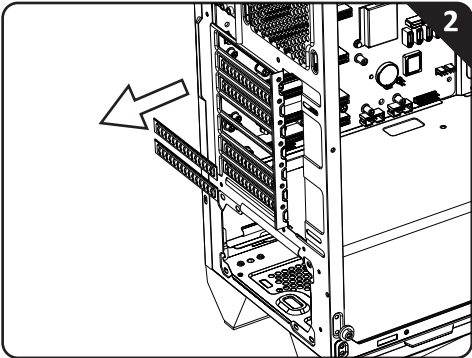
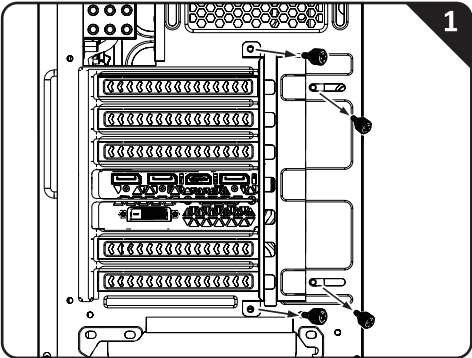
C. Reset Button

G. HDD LED

D. USB3.0 Port

H. Power LED

# PCI-E Card Installation



# BE INVINCIBLE

[WWW.BITFENIX.COM](http://WWW.BITFENIX.COM)



**BitFenix Co., Ltd.**

3F, No.79, Sec. 1, Xintai 5th Rd.,

**bitfenix**

Xi Zhi District, New Taipei City, Taiwan, R.O.C.

© 2018 BITFENIX Co., Ltd. All Rights Reserved. All trademarks are registered to their respective owners

For the most updated information, please visit our official website : <http://www.bitfenix.com> Ver 1.0 | 2018/11