



NI522

- Quick Installation Guide
- Guide d'installation rapide
- 安裝指示說明
- 安裝指示说明

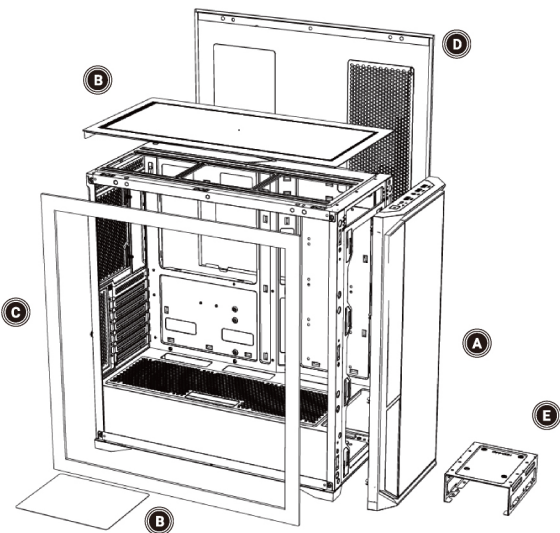
Package Content/Contenu du coffret/產品內容/產品內容

Case	Quick Installation Guide	Accessory Pack
3X Motherboard standoff	8X 3.5" HDD screw	6X PSU screw
1X Motherboard standard screw	10X Cable Tie	11X Motherboard screws

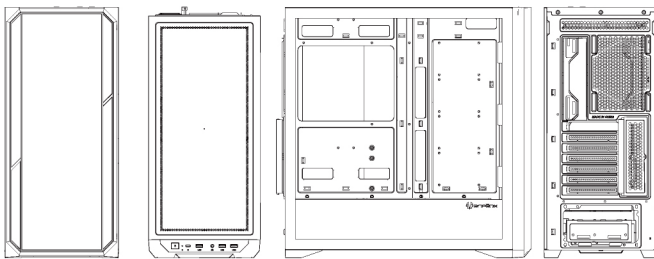
Boîtier	Guide d'installation rapide	Pack d'accessoires
3X entretoise de carte mère	8X vis pour disque dur 3.5"	6X vis de bloc d'alimentation
1X vis de carte mère standard	10X attache de câble	11X Vis de la carte mère

機殼	安裝指示說明	配件盒
3X 主板腳柱	8X 3.5" 硬碟螺絲	6X 電源螺絲
1X 蓋筒	10X 束線帶	11X 主機板螺絲

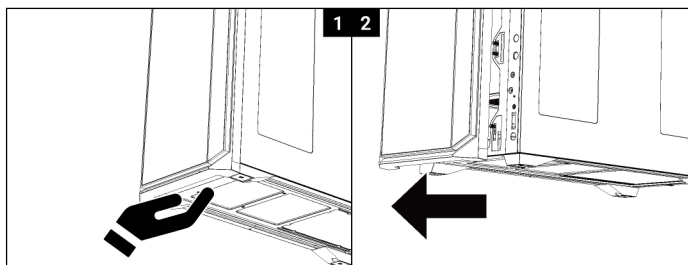
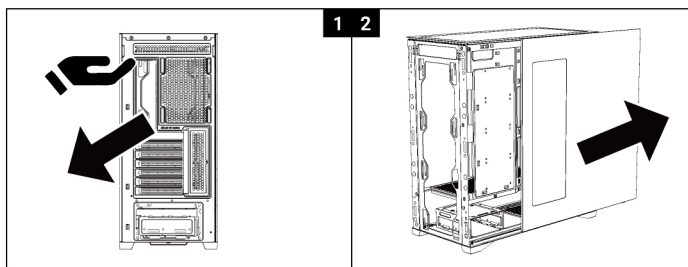
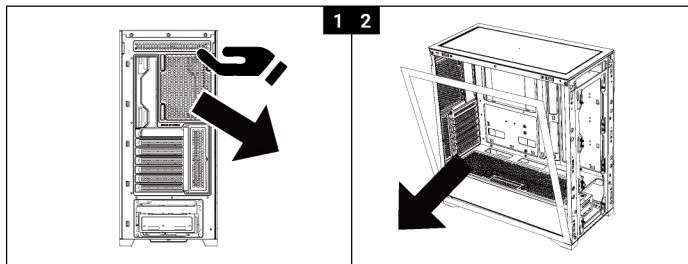
机箱	安裝指示说明	零件盒
3X 主板脚柱	8X 3.5" 硬盘螺丝	6X 电源螺丝
1X 筒柱套	10X 扎带	11X 主机板螺丝



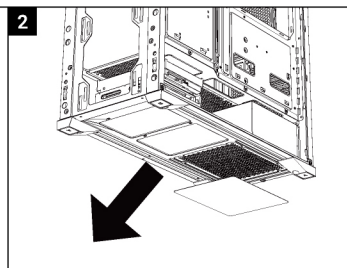
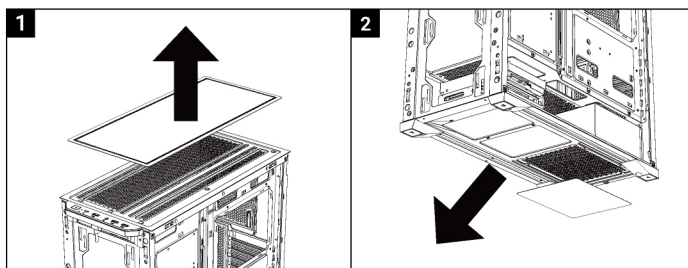
- | | | | |
|--|-----------------------------|-----------------|---------------|
| A Front Panel | D Side Panel | A 前面板 | D 右側板 |
| B Dust Filter | E Hard Drive Tray | B 濾網 | E 硬碟支架 |
| C Tempered Glass Side Panel | | C 鋼化玻璃側板 | |
| A Panneau avant | D Panneau latéral | A 前面板 | D 右側板 |
| B Filtre anti-poussière | E Rack de disque dur | B 過濾器 | E 硬盘支架 |
| C Panneau lateral en verre trempé | | C 鋼化玻璃側板 | |



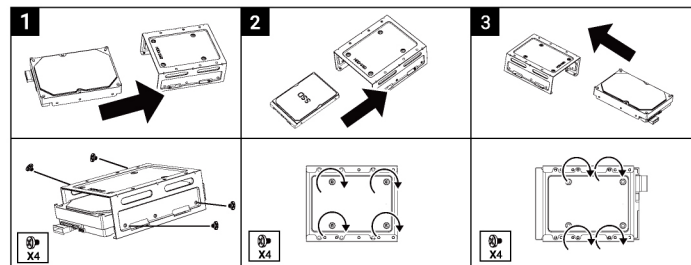
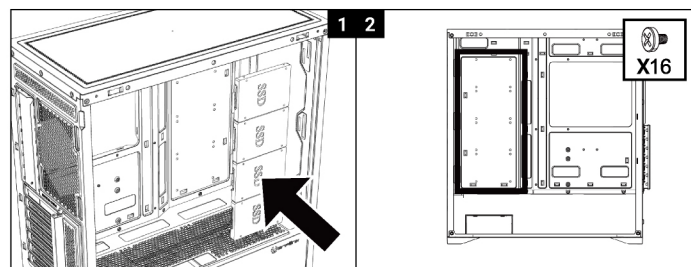
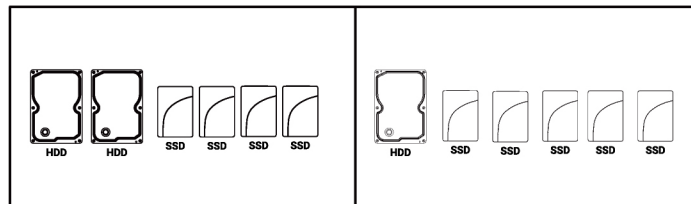
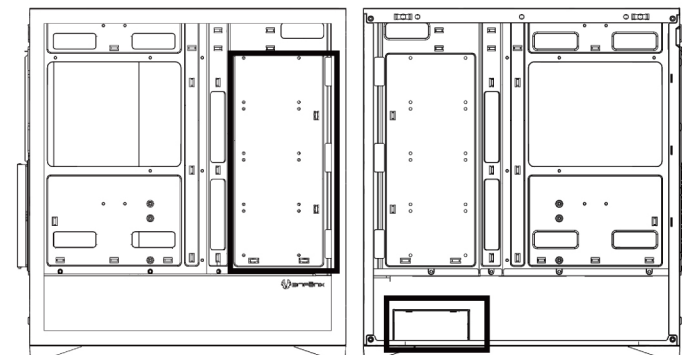
How to remove the Right side panel/Tempered glass side panel/front panel Comment retirer le panneau latéral droit / le panneau latéral en verre trempé / le panneau avant 如何移除右側板 | 鋼化玻璃側板 | 前面板 | 如何移除右面板 | 鋼化玻璃面板 | 前面板



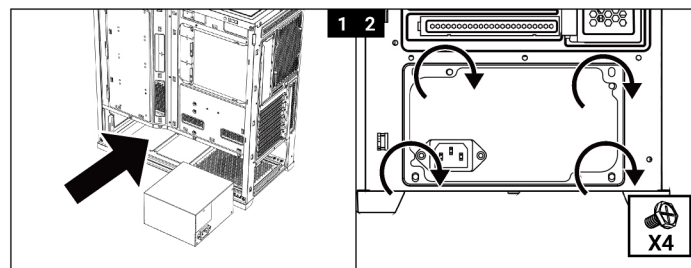
How to remove the dust filters/Comment retirer les filtres anti-poussière 如何移除濾網 / 如何移除過濾器



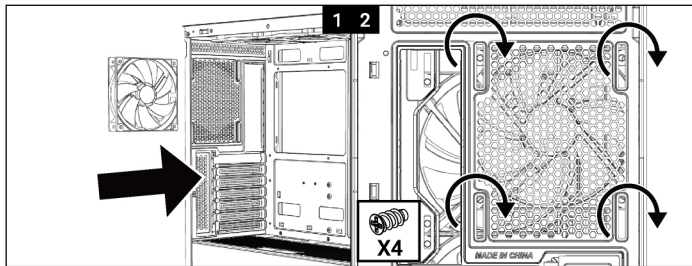
Drive Locations/Emplacements de disques durs/硬碟位置/硬盘位置



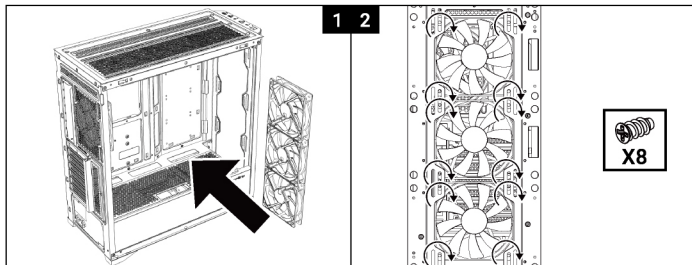
PSU Installation/Installation du bloc d'alimentation/電源安裝/電源安裝



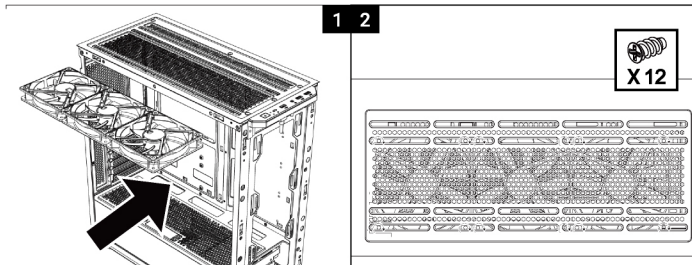
Fan (Back) Installation/Installation du ventilateur arrière
風扇(後方)安裝/風扇(後方)安裝



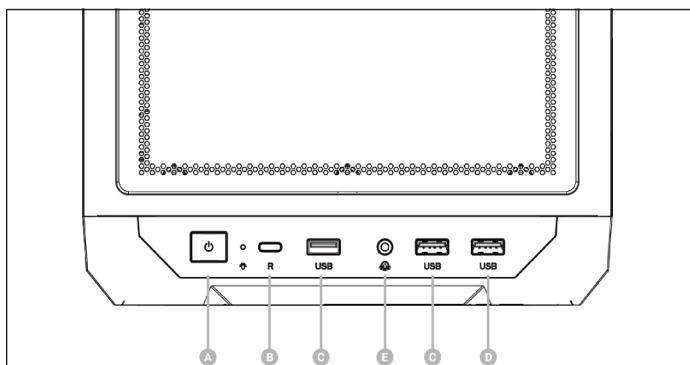
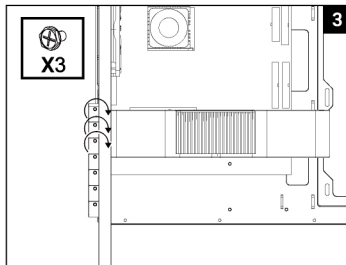
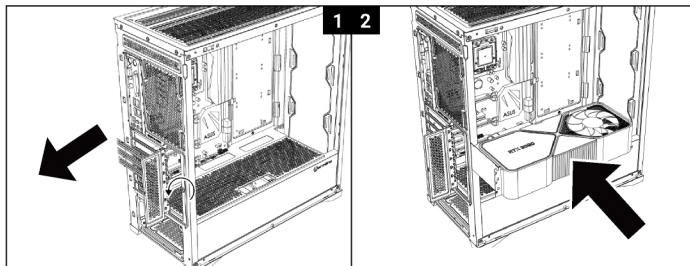
Fan (MB) Installation /Installation du ventilateur MB
風扇(MB)安裝/風扇(MB)安裝



Fan (Top) Installation/Installation du ventilateur supérieur
風扇(上方)安裝/風扇(上方)安裝



VGA Card Installation/Installation de la carte graphique/顯卡安裝/顯卡安裝



- | | |
|-----------------------|---|
| A Power Button | D USB 3.0 Port |
| B Reset Button | E Headphone Jack & Microphone Jack |
| C USB 2.0 Port | |

- | | | |
|--|-------------------------|-------------------------|
| A Bouton d'alimentation | A 電源開關 | A 电源开关 |
| B Bouton de réinitialisation | B 重置按鈕 | B 重置按钮 |
| C USB 2.0 Port | C USB 2.0 Port | C USB 2.0 Port |
| D Port USB 3.0 | D USB 3.0 Port | D USB 3.0 Port |
| E Prise jack de casque & Prise jack de microphone | E 前置耳機孔 & 前置麥克風孔 | E 前置耳机孔 & 前置麦克风孔 |



Official Website