



# EAGLE LEO PRISM

Quick Installation Guide  
 Guide d'installation rapide  
 安裝指示說明  
 安裝指示说明

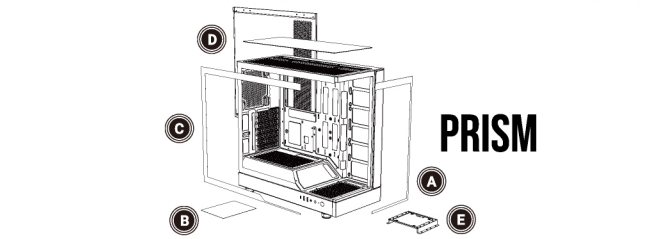
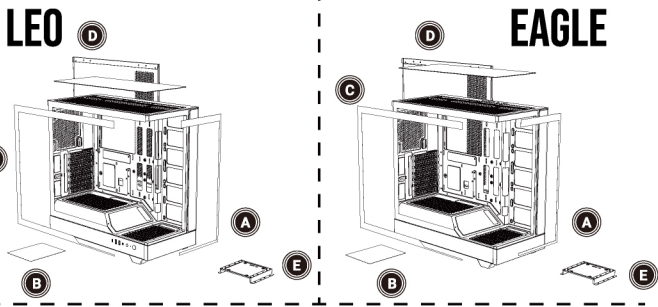
Package Content/Contenu du coffret/產品內容/产品内容

Case	Quick Installation Guide	Accessory Pack
3X Motherboard standoff	8X 3.5" HDD screw	8X PSU screw
23X Motherboard standard screw	10X Cable Tie	1X Copper pillar sleeve

Boîtier	Guide d'installation rapide	Pack d'accessoires
3X entretoise de carte mère	8X vis pour disque dur 3.5"	8X vis de bloc d'alimentation
23X vis de carte mère standard	10X attache de câble	1X Manchon de pilier en cuivre

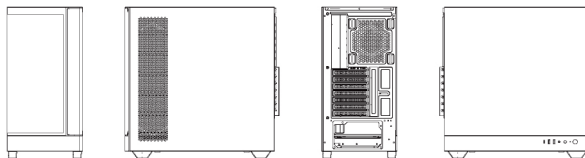
機殼	安裝指示說明	配件盒
3X 主板腳柱	8X 3.5" 硬碟螺絲	8X 電源螺絲
23X 主板螺絲	10X 束線帶	1X 套筒

机箱	安裝指示说明	零件盒
3X 主板脚柱	8X 3.5" 硬盘螺丝	8X 电源螺丝
23X 主板螺丝	10X 扎带	1X

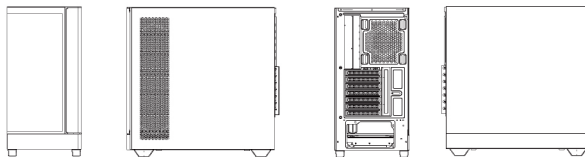


- A Front Tempered Glass Side Panel
- B Dust Filter
- C Tempered Glass Side Panel
- D Side Panel
- E SSD/HDD Cage
- A 前面板
- B 濾網
- C 鋼化玻璃側板
- D 右側板
- E 硬碟盤
- A Panneau latéral avant en verre trempé
- B Filtre anti-poussière
- C Panneau latéral en verre trempé
- D Panneau latéral
- E Plaque SSD/HDD
- A 前面板
- B 过滤器
- C 钢化玻璃面板
- D 右側板
- E 硬碟盘

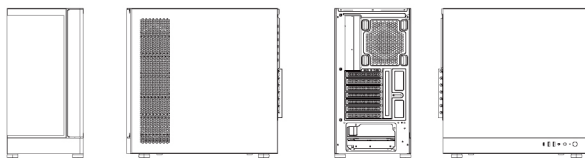
LEO



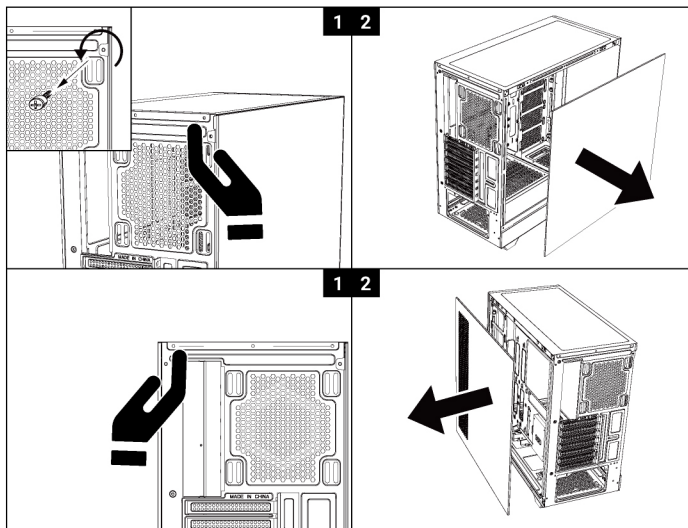
EAGLE



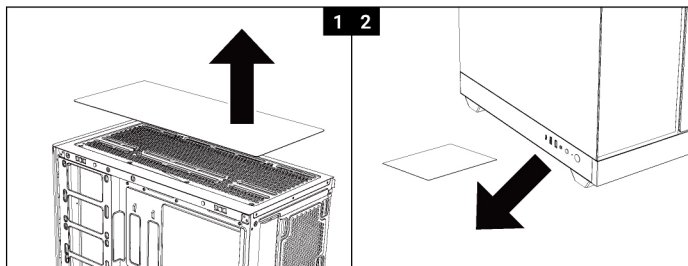
PRISM



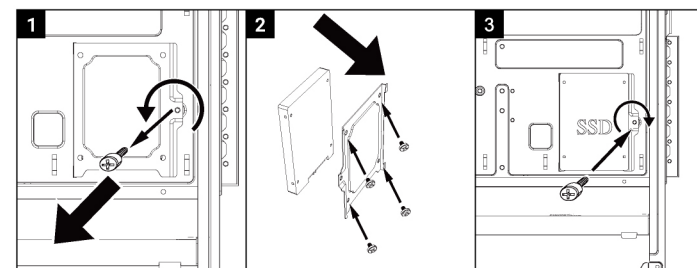
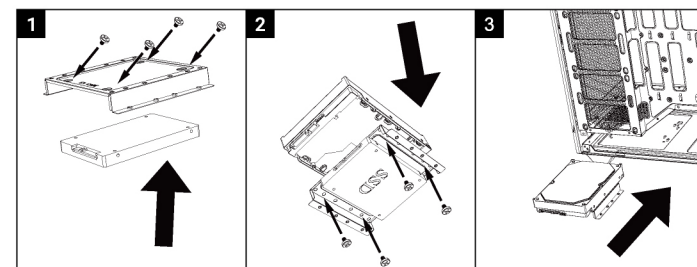
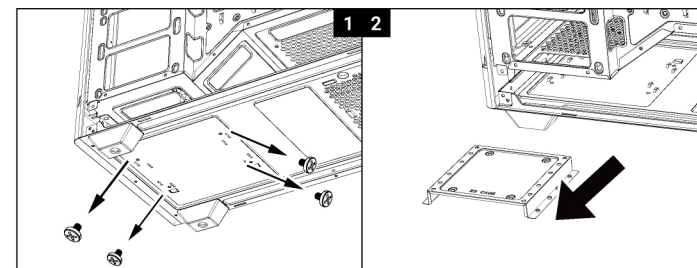
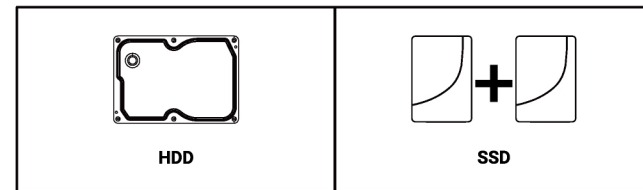
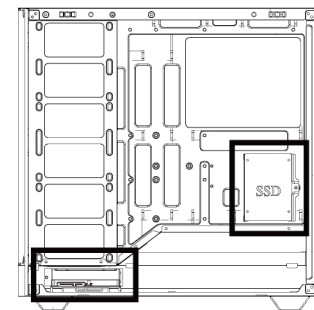
How to remove the Right side panel/Tempered glass side panel/front panel  
 Comment retirer le panneau latéral droit / le panneau latéral en verre trempé / le panneau avant  
 如何移除右側板 / 鋼化玻璃側板 / 前面板 / 如何移除右面板 / 鋼化玻璃面板 / 前面板



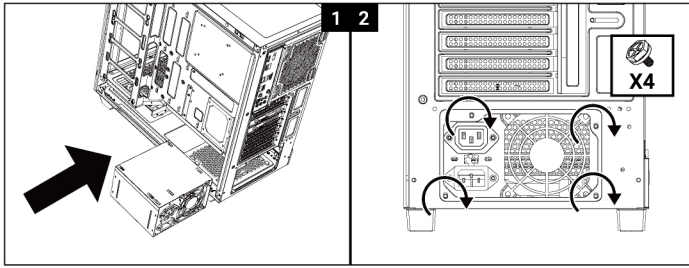
How to remove the dust filters/Comment retirer les filtres anti-poussière  
 如何移除濾網 / 如何移除过滤器



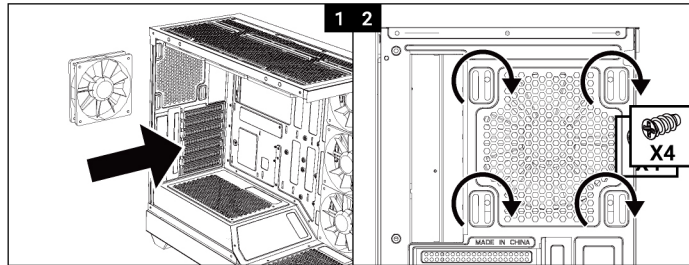
Drive Locations/Emplacements de disques durs/硬碟位置/硬盘位置



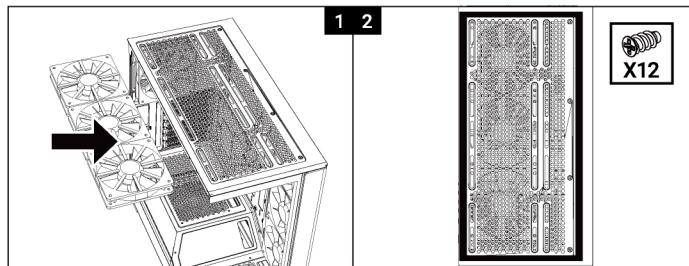
PSU Installation/Installation du bloc d'alimentation/電源安裝/电源安裝



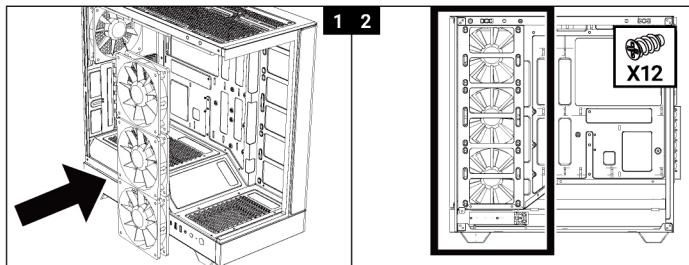
Fan (Back) Installation/Installation du ventilateur arrière  
風扇(後方)安裝/風扇(后方)安裝



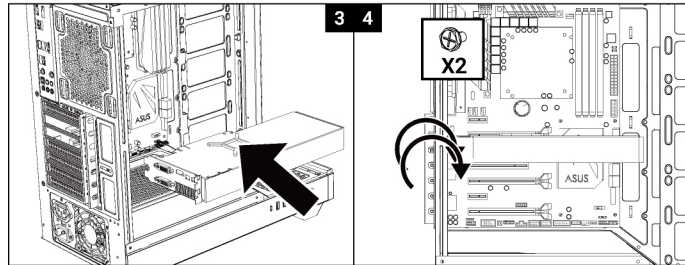
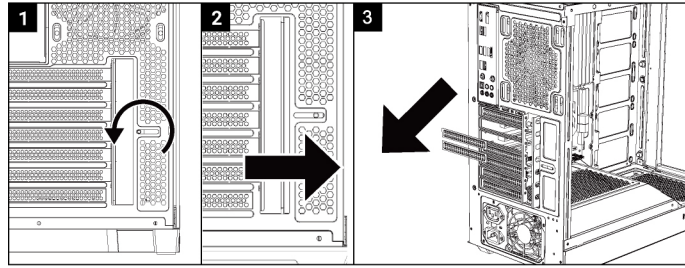
Fan (Top) Installation/Installation du ventilateur supérieur  
風扇(上方)安裝/風扇(上方)安裝



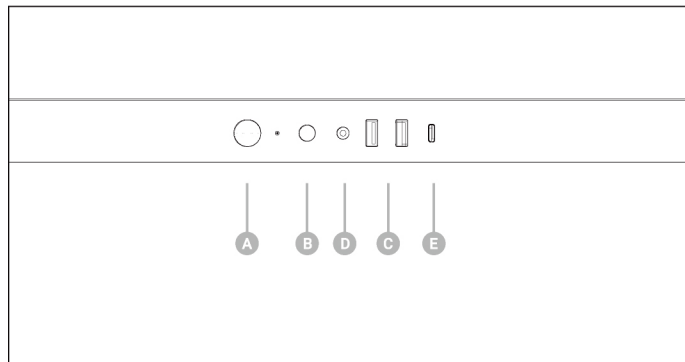
MB Tray Installation/Installation du ventilateur du plateau de la carte mère  
風扇(主板)安裝/風扇(主板)安裝



VGA Card Installation/Installation de la carte graphique/顯卡安裝/显卡安裝



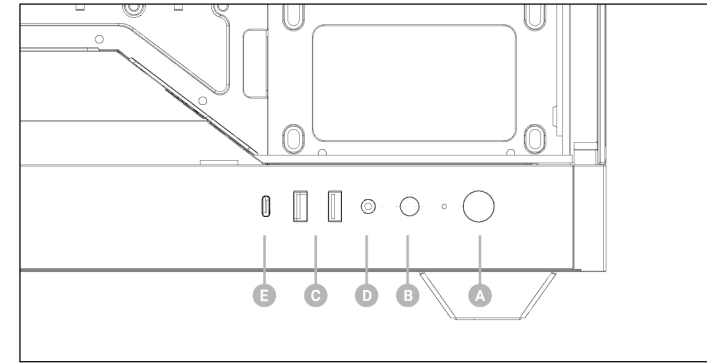
# EAGLE IO



- A** Power Button      **C** USB 3.0 Port & USB Port      **E** USB 3.1/TypeC
- B** Reset Button      **D** Headphone Jack/Microphone Jack

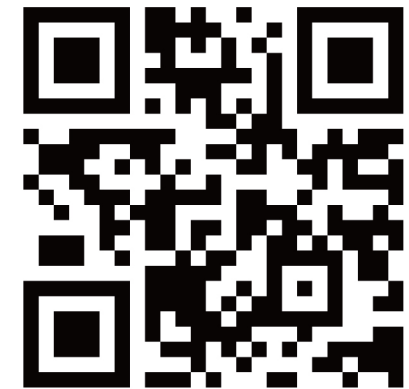
- |                                     |                        |                        |
|-------------------------------------|------------------------|------------------------|
| <b>A</b> Bouton d'alimentation      | <b>A</b> 電源開關          | <b>A</b> 电源开关          |
| <b>B</b> Bouton de réinitialisation | <b>B</b> 重置按鈕          | <b>B</b> 重置按钮          |
| <b>C</b> Port USB 3.0 & Port USB    | <b>C</b> USB 3.0 Port  | <b>C</b> USB 3.0 Port  |
| <b>D</b> Prise jack de casque       | <b>D</b> 前置耳機孔         | <b>D</b> 前置耳机孔         |
| <b>D</b> Prise jack de microphone   | <b>D</b> 前置麥克風孔        | <b>D</b> 前置麦克风孔        |
| <b>E</b> Port USB 3.1               | <b>E</b> USB 3.1/TypeC | <b>E</b> USB 3.1/TypeC |

# LEO & PRISM IO



- A** Power Button      **C** USB 3.0 Port & USB Port      **E** USB 3.1/TypeC
- B** Reset Button      **D** Headphone Jack/Microphone Jack

- |                                     |                        |                        |
|-------------------------------------|------------------------|------------------------|
| <b>A</b> Bouton d'alimentation      | <b>A</b> 電源開關          | <b>A</b> 电源开关          |
| <b>B</b> Bouton de réinitialisation | <b>B</b> 重置按鈕          | <b>B</b> 重置按钮          |
| <b>C</b> Port USB 3.0 & Port USB    | <b>C</b> USB 3.0 Port  | <b>C</b> USB 3.0 Port  |
| <b>D</b> Prise jack de casque       | <b>D</b> 前置耳機孔         | <b>D</b> 前置耳机孔         |
| <b>D</b> Prise jack de microphone   | <b>D</b> 前置麥克風孔        | <b>D</b> 前置麦克风孔        |
| <b>E</b> Port USB 3.1               | <b>E</b> USB 3.1/TypeC | <b>E</b> USB 3.1/TypeC |



Official Website