



# GRAPH

Quick Installation Guide  
 Guide d'installation rapide  
 安裝指示說明  
 安裝指示說明

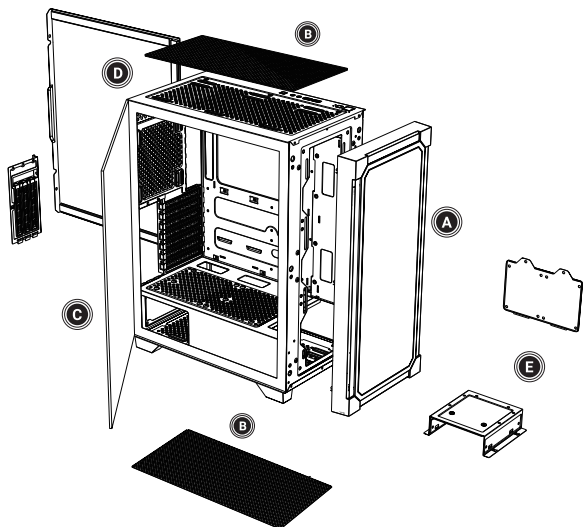
Package Content/Contenu du coffret/產品內容/產品內容

Case	Quick Installation Guide	Accessory Pack
3X Motherboard standoff	8X 3.5" HDD screw	4X PSU screw
24X Motherboard standard screw	4X Cable Tie	

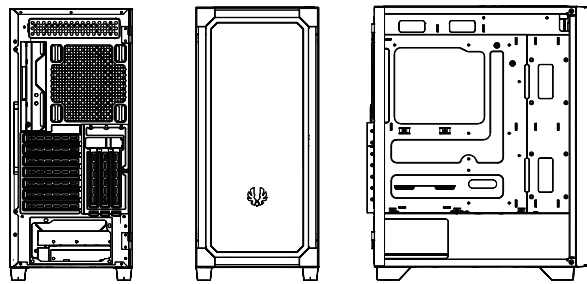
Boîtier	Guide d'installation rapide	Pack d'accessoires
3X entretoise de carte mère	8X vis pour disque dur 3,5"	4X vis de bloc d'alimentation
24X vis de carte mère standard	4X attache de câble	

機殼	安裝指示說明	配件盒
3X 主板腳柱	8X 3.5" 硬碟螺絲	4X 電源螺絲
24X 主板螺絲	4X 束線帶	

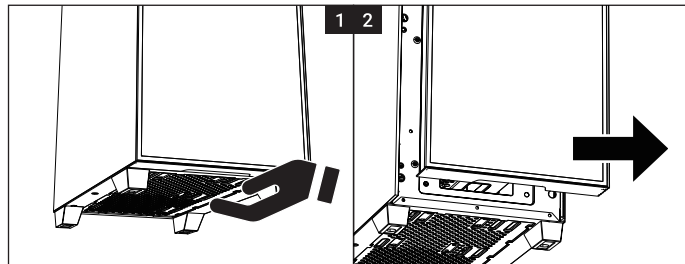
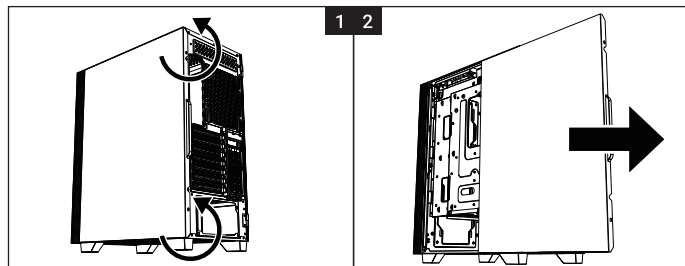
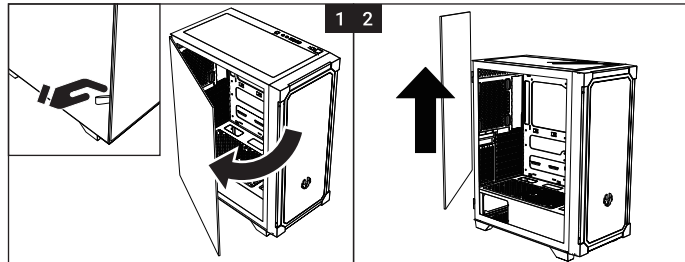
机箱	安裝指示說明	零件盒
3X 主板脚柱	8X 3.5" 硬盘螺丝	4X 电源螺丝
24X 主板螺丝	4X 扎带	



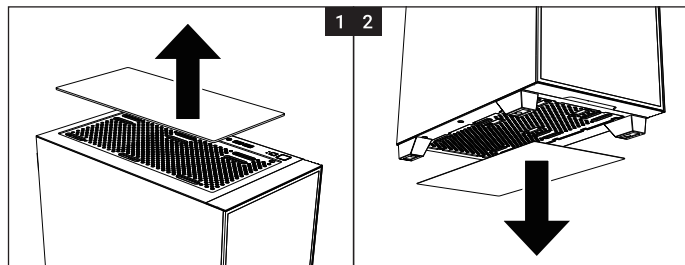
- |                                   |                      |          |        |
|-----------------------------------|----------------------|----------|--------|
| A Front Panel                     | D Side Panel         | A 前面板    | D 右側板  |
| B Dust Filter                     | E Hard Drive Tray    | B 濾網     | E 硬碟支架 |
| C Tempered Glass Side Panel       |                      | C 鋼化玻璃側板 |        |
| A Panneau avant                   | D Panneau latéral    | A 前面板    | D 右側板  |
| B Filtre anti-poussière           | E Rack de disque dur | B 过滤器    | E 硬盘支架 |
| C Panneau latéral en verre trempé |                      | C 钢化玻璃面板 |        |



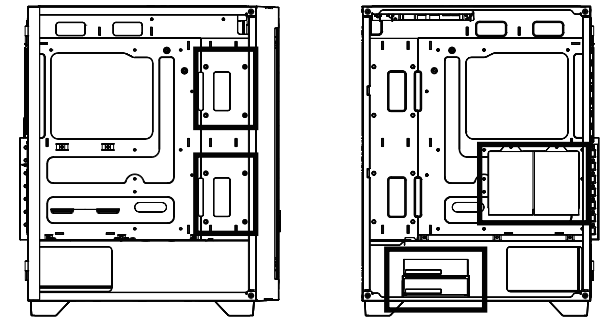
How to remove the Right side panel/Tempered glass side panel/front panel  
 Comment retirer le panneau latéral droit / le panneau latéral en verre trempé / le panneau avant  
 如何移除右側板 | 鋼化玻璃側板 | 前面板 / 如何移除右側板 | 鋼化玻璃側板 | 前面板



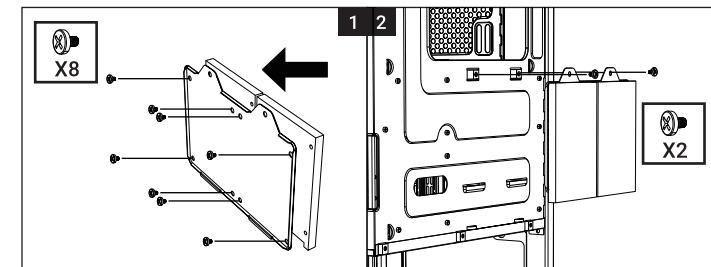
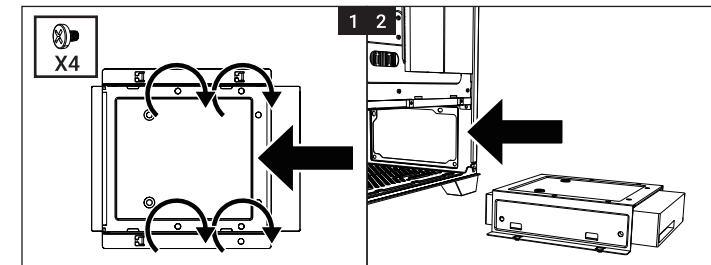
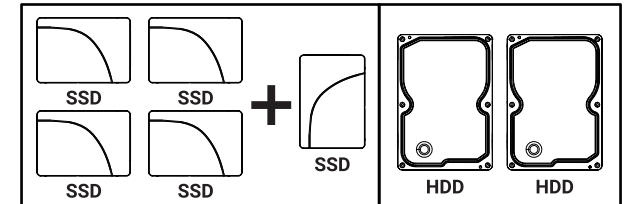
How to remove the dust filters/Comment retirer les filtres anti-poussière  
 如何移除濾網 / 如何移除过滤器



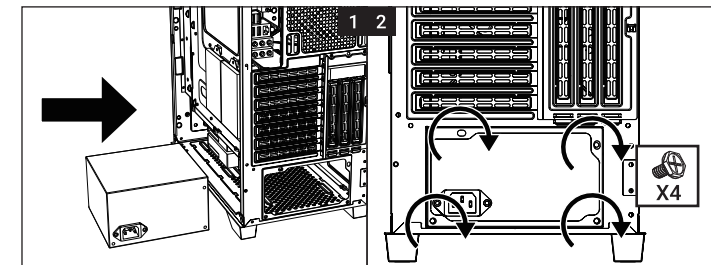
Drive Locations/Emplacements de disques dures/硬碟位置/硬盘位置



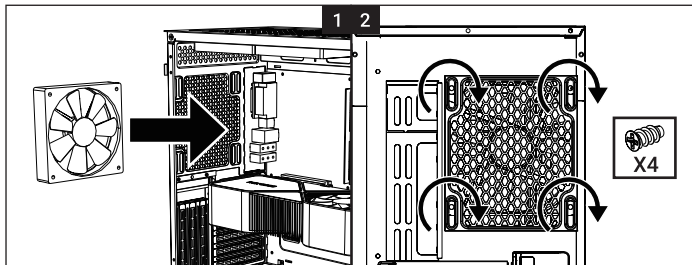
2X HDD or 1XHDD 1XSSD



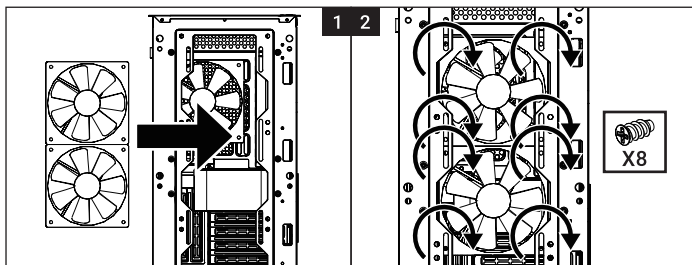
PSU Installation/Installation du bloc d'alimentation/電源安裝/电源安裝



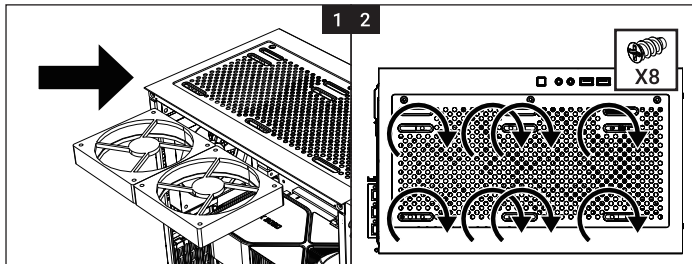
Fan (Back) Installation/Installation du ventilateur arrière  
風扇(後方)安裝/風扇(後方)安裝



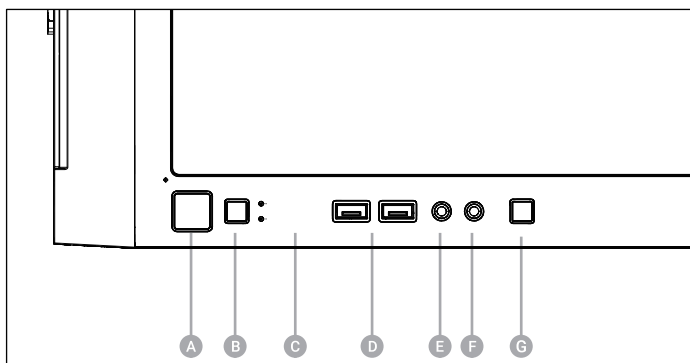
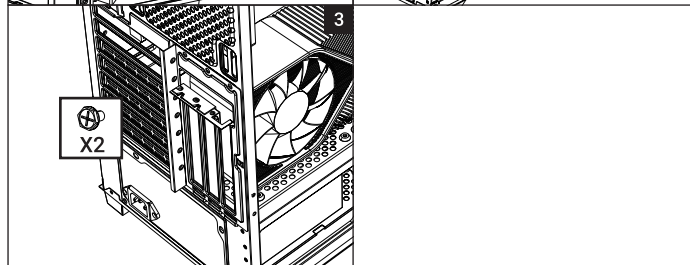
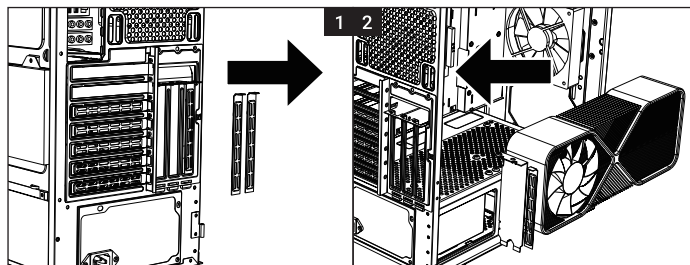
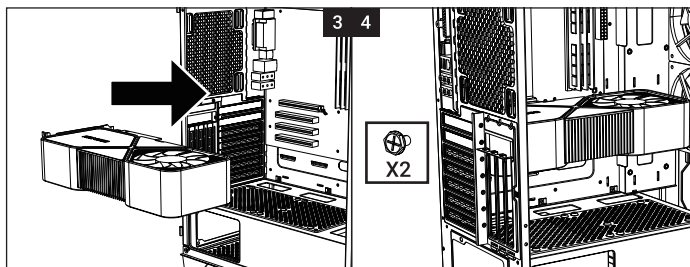
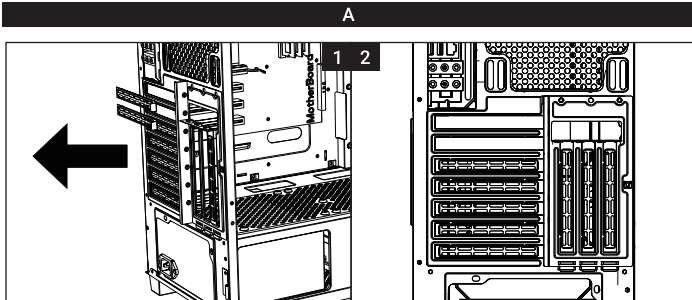
Fan (Front) Installation/Installation du ventilateur avant  
風扇(前方)安裝/風扇(前方)安裝



Fan (Top) Installation/Installation du ventilateur supérieur  
風扇(上方)安裝/風扇(上方)安裝



VGA Card Installation/Installation de la carte graphique/顯卡安裝/顯卡安裝



- A Power Button
- B Reset Button
- C USB 2.0 Port
- D USB 3.0 Port
- E Headphone Jack
- F Microphone Jack
- G LED Button

- |                              |                |                |
|------------------------------|----------------|----------------|
| A Bouton d'alimentation      | A 電源開關         | A 电源开关         |
| B Bouton de réinitialisation | B 重置按鈕         | B 重置按钮         |
| C USB 2.0 Port               | C USB 2.0 Port | C USB 2.0 Port |
| D Port USB 3.0               | D USB 3.0 Port | D USB 3.0 Port |
| E Prise jack de casque       | E 前置耳機孔        | E 前置耳机孔        |
| F Prise jack de microphone   | F 前置麥克風孔       | F 前置麦克风孔       |
| G bouton DEL                 | G LED按鈕        | G LED按钮        |

