



# CETO BASIC

- Quick Installation Guide
- Guide d'installation rapide
- 安裝指示說明
- 安裝指示說明

## Package Content/Contenu du coffret/產品內容/產品內容

Case	Quick Installation Guide	Accessory Pack
3X Motherboard standoff	8X 3.5" HDD screw	8X PSU screw
23X Motherboard standard screw	10X Cable Tie	1X Copper pillar sleeve

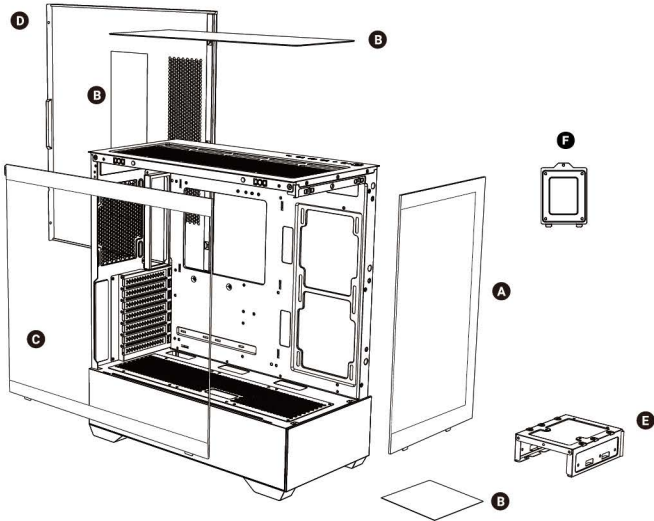
Boîtier	Guide d'installation rapide	Pack d'accessoires
3X entretoise de carte mère	8X vis pour disque dur 3,5"	6X vis de bloc d'alimentation
13X vis de carte mère standard	3X attache de câble	1X Manchon de pilier en cuivre

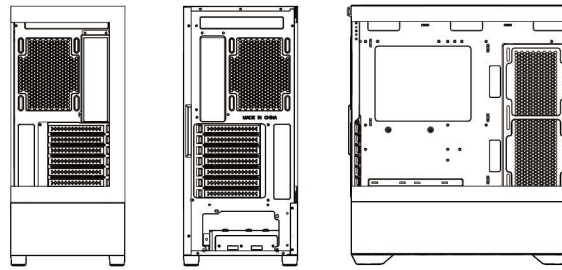
機殼	安裝指示說明	配件盒
3X 主板腳柱	8X 3.5" 硬碟螺絲	6X 電源螺絲
13X 主板螺絲	3X 束線帶	1X 銅柱套筒

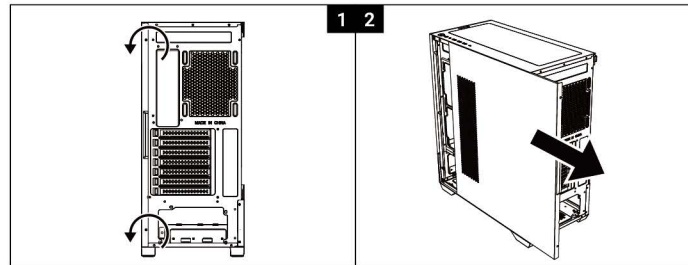
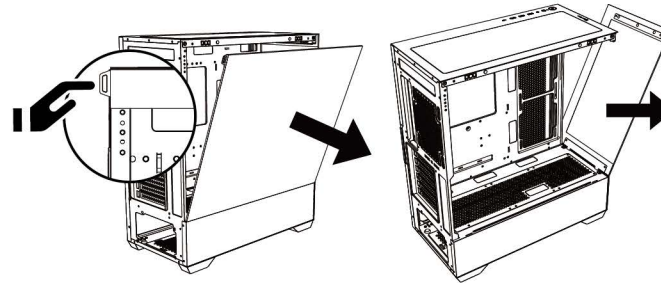
机箱	安裝指示說明	零件盒
3X 主板脚柱	8X 3.5" 硬盘螺丝	6X 电源螺丝
13X 主板螺丝	3X 扎带	1X 铜柱套筒



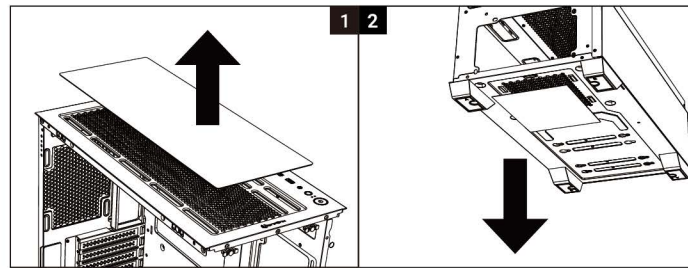
- |                                     |                          |                  |                 |
|-------------------------------------|--------------------------|------------------|-----------------|
| <b>A</b> Tempered Glass Front Panel | <b>D</b> Side Panel      | <b>A</b> 強化玻璃前面板 | <b>D</b> 右側板    |
| <b>B</b> Dust Filter                | <b>E</b> Hard Drive Tray | <b>B</b> 濾網      | <b>E</b> 硬碟支架   |
| <b>C</b> Tempered Glass Side Panel  | <b>F</b> SSD Plate       | <b>C</b> 強化玻璃側板  | <b>F</b> 固態硬碟支架 |
- 
- |  |                             |                  |                 |
|--|-----------------------------|------------------|-----------------|
| <b>A</b> Panneau avant en verre trempé   | <b>D</b> Panneau latéral    | <b>A</b> 钢化玻璃前面板 | <b>D</b> 右侧板    |
| <b>B</b> Filtre anti-poussière           | <b>E</b> Rack de disque dur | <b>B</b> 过滤器     | <b>E</b> 硬盘支架   |
| <b>C</b> Panneau lateral en verre trempé | <b>F</b> Plaque SSD         | <b>C</b> 钢化玻璃侧板  | <b>F</b> 固态硬盘支架 |



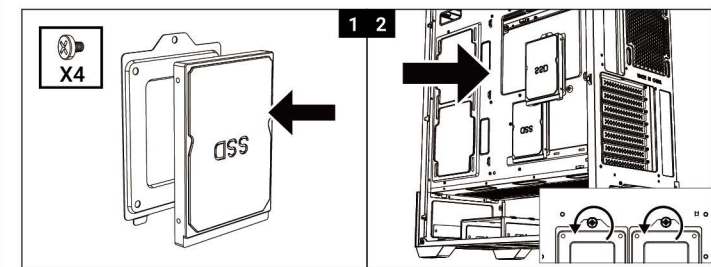
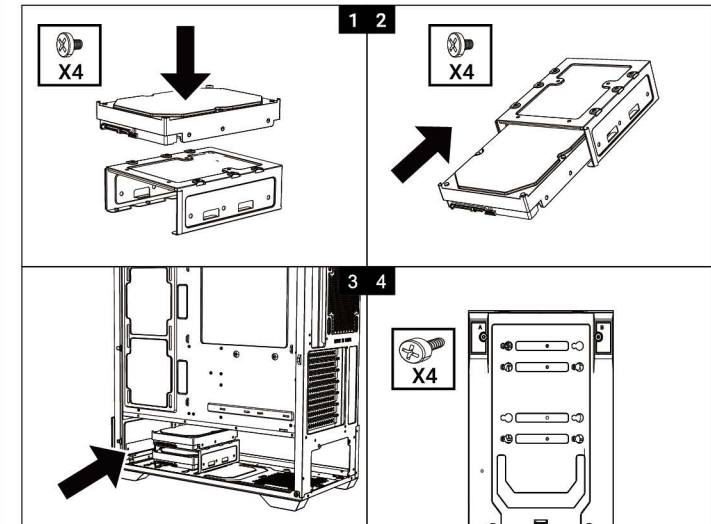
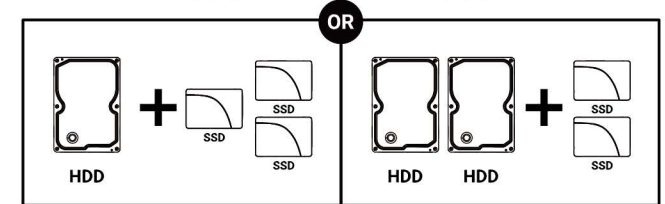
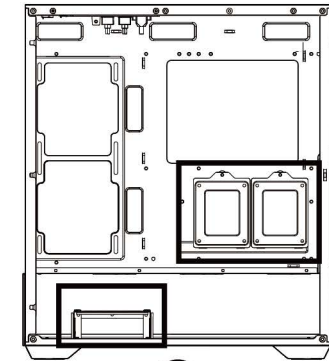
**How to remove the Right side panel/Tempered glass side panel/front panel**  
 Comment retirer le panneau latéral droit / le panneau latéral en verre trempé / le panneau avant  
 如何移除右側板 | 鋼化玻璃側板 | 前面板 / 如何移除右側板 | 鋼化玻璃側板 | 前面板



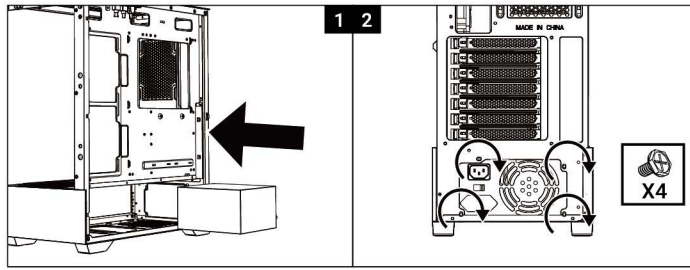
**How to remove the dust filters/Comment retirer les filtres anti-poussière**  
 如何移除濾網 / 如何移除过滤器



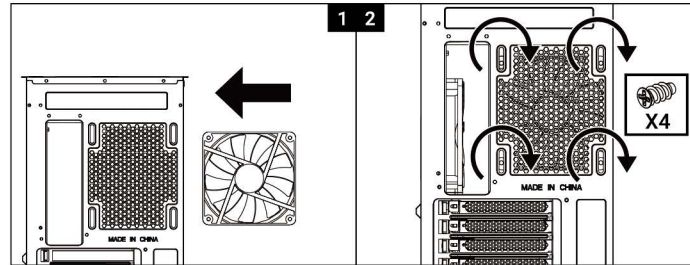
## Drive Locations/Emplacements de disques durs/硬碟位置/硬盘位置



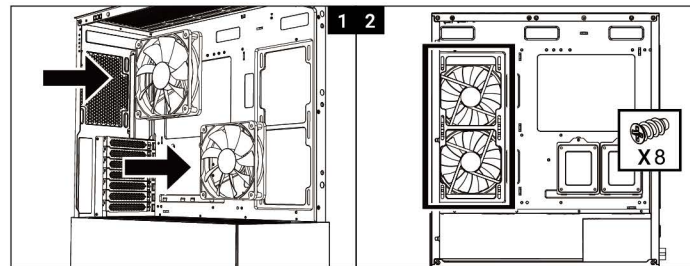
PSU Installation/Installation du bloc d'alimentation/電源安裝/电源安裝



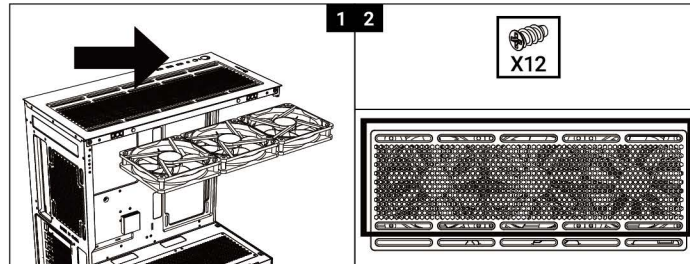
Fan (Back) Installation/Installation du ventilateur arrière  
風扇(後方)安裝/風扇(后方)安裝



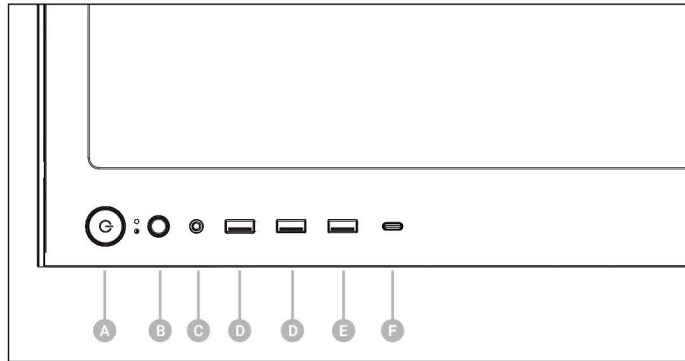
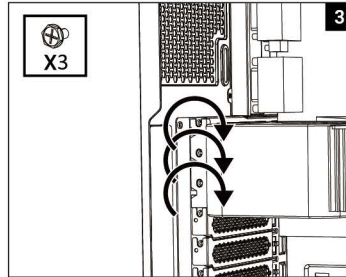
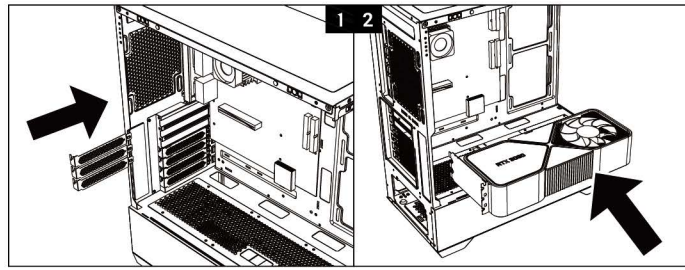
MB Tray Installation/Installation du ventilateur avant  
風扇(前方)安裝/風扇(前方)安裝



Fan (Top) Installation/Installation du ventilateur supérieur  
風扇(上方)安裝/風扇(上方)安裝



VGA Card Installation/Installation de la carte graphique/顯卡安裝/显卡安裝



- A** Power Button      **C** Headphone /Microphone Jack      **E** USB 3.0 Port
- B** Reset Button      **D** USB      **F** USB 3.1/TypeC

- |                                     |                        |                        |
|-------------------------------------|------------------------|------------------------|
| <b>A</b> Bouton d'alimentation      | <b>A</b> 電源開關          | <b>A</b> 电源开关          |
| <b>B</b> Bouton de réinitialisation | <b>B</b> 重置按鈕          | <b>B</b> 重置按钮          |
| <b>C</b> Prise jack de casque       | <b>C</b> 前置耳機孔         | <b>C</b> 前置耳机孔         |
| <b>C</b> Prise jack de microphone   | <b>C</b> 前置麥克風孔        | <b>C</b> 前置麦克风孔        |
| <b>D</b> Port USB                   | <b>D</b> USB Port      | <b>D</b> USB Port      |
| <b>E</b> Port USB 3.0               | <b>E</b> USB 3.0       | <b>E</b> USB 3.0       |
| <b>F</b> Port USB 3.1               | <b>F</b> USB 3.1/TypeC | <b>F</b> USB 3.1/TypeC |

Official Website	火鳥官方網站	Bitfenix Webshop	
Facebook	Instagram	Youtube	Support Ticket
火鳥臉書粉絲專頁	火鳥官方微博	火鳥淘宝官方店鋪	