



Pandora ATX



Pandora ATX

The BitFenix Pandora ATX brings all the sought-after elements from the original Pandora to full-size ATX systems. Key features are the 2.8" programmable BitFenix ICON™ LCD display in the front and support for 360mm radiators as well as expansion cards up to 440mm. Aesthetics have taken precedence during the design process, as the Pandora ATX retains its little brother's uniquely curved exterior, while special attention has been paid to ensure the interior shows off your hardware at its best through the side window.





Pandora ATX - Exterior

Setting the Pandora ATX apart is its unique curved panel design and the ICON display. Power and reset buttons are tastefully and non-intrusively backlit, while the side panel features an acrylic window. The Pandora ATX top panel starts with the front I/O, featuring dual USB 3.0 ports, dual audio jacks and dual USB 2.0 ports as well as power and reset buttons. The rest of Pandora ATX's top cover consists entirely of a pop-off grille with a built-in dust filter.





Pandora ATX - ICON™ Display

The 2.8" ICON™ color display in the front of the Pandora ATX lets you customize your front panel with a simple drag-and-drop interface. Choose any picture or logo you want in the front!



(Not available on Pandora Core)



Pandora ATX - Interior

Interior-wise, the Pandora ATX is designed to not only accommodate your high-end hardware, but to show it off as tastefully as possible. Full ATX motherboards are now supported, and up to seven 2.5" SSDs can be installed, or five 2.5" units plus two 3.5" HDDs. The PSU is hidden away in the bottom, behind the power cover, allowing for stealthy cable management and clean builds. This is further supported by a 20mm clearance between the off-side door and the back of the motherboard tray and plentiful tie strap mounts.



Power cover – for improved case rigidity, noise shielding and a cleaner look



Pandora ATX – Watercooling

The Pandora ATX is set apart from the Pandora Core not only by the use of its Icon™ display, but also a pre-installed 140mm fan, its reservoir bracket mounted to the top of the case as well as a pump mount at the bottom of the motherboard compartment. The Pandora ATX will comfortably house one 360mm radiator, either in the front or the top. For external watercooling needs, the case has rubber grommets above the rear exhaust fan for tube routing.



(The Pandora Core does not include reservoir and pump brackets)



Pandora ATX – Dust Filters

Two easy-to-remove magnetically mounted dust filters are included with the Pandora ATX case – one for the three 120mm fans in the front, and one for the power supply, located in the bottom rear of the case.

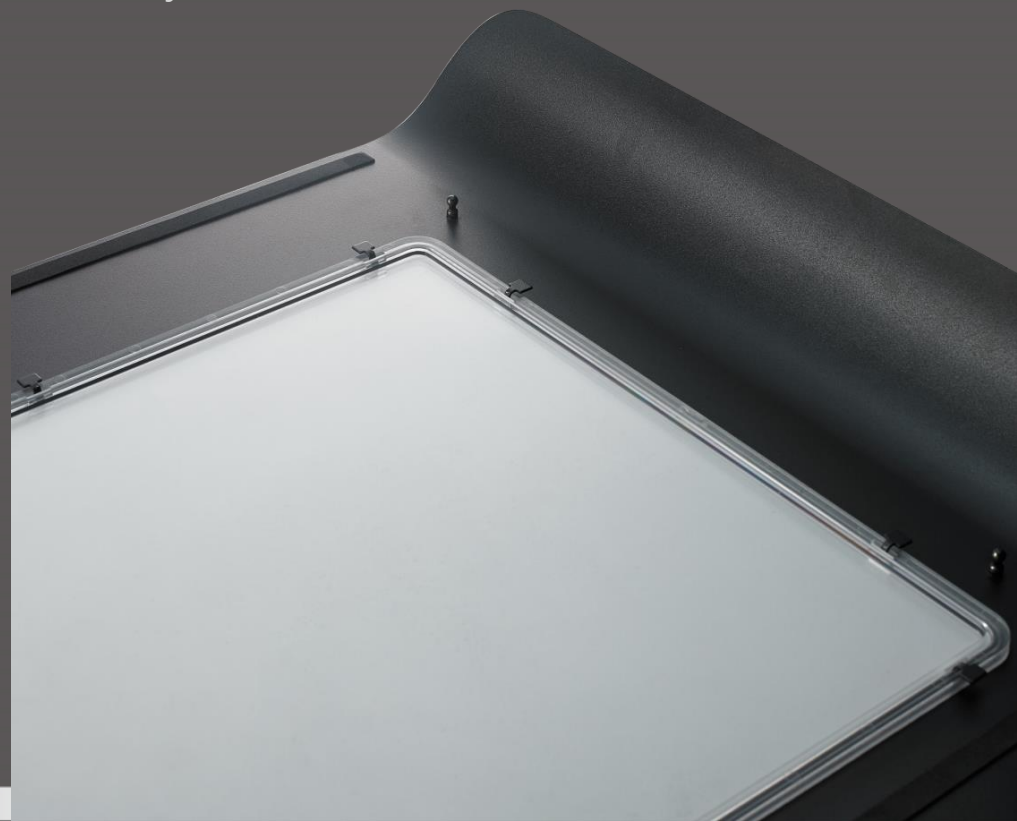




Pandora ATX - Detail

Curved front panels are a unique feature of the Pandora ATX and so are their mounts. The leading edge is fixed with pushpins, and two insulating strips are installed to each panel. The trailing edge is fixed to the back of the case with thumb screws.

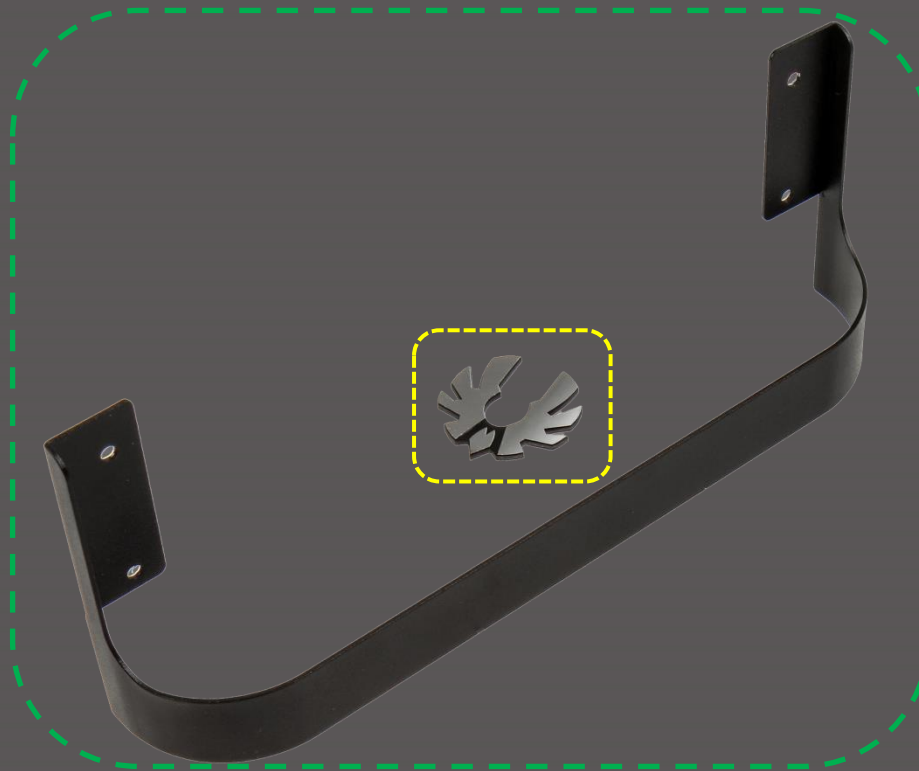
The pump bracket is compatible with all existing pumps aimed at the PC market, while the SSD and HDD brackets are designed to be easy to install – with thumb screws.





Pandora ATX – Detail Cont'd

Also included with all Pandora ATX cases is a foot to be installed separately to the rear, as well as a stylish aluminum front badge.





Pandora ATX – Example Build





Pandora ATX – Example Build





Pandora ATX – Example Build





Pandora ATX – Example Build





Pandora ATX - Specifications

Pandora ATX Core		Pandora ATX
Materials	Steel, ABS	
Supported Motherboards	ATX, Micro ATX, Mini-ITX	
3.5" Drive Bays	3	4
2.5" Drive Bays	2	4
Front/Top I/O	2x USB 3.0, 2x USB 2.0, 1x 3.5mm Mic-in, 1x 3.5mm Line-out	
Cooling Front	Max 3x 120mm OR 2x 140mm (Not Included)	1x 140mm (Included), Max 3x 120mm OR 2x 140mm (Not Included)
Cooling Rear	1x 120mm (Included)	1x 120mm (Included)
Cooling Top	Max 3x 120mm OR 2x 140mm (Not Included)	Max 3x 120mm OR 2x 140mm (Not Included)
Expansion Slots	7	
Power Supply	ATX & EPS 12V, up to 220mm length	
Highlights	One piece power cover and MB tray Top, Front and Bottom Dust Filters 360mm Radiator Support 20mm Cable Clearance Graphics Card Length up to 440mm	BitFenix ICON™ Programmable Display One piece power cover and MB tray Top, Front and Bottom Dust Filters 360mm Radiator Support 20mm Cable Clearance Graphics Card Length up to 440mm
Dimensions (W x D x H)	203 x 510 x 558mm	
Weight	9.66kg (net), 11,16kg (gross)	9.92kg (net), 11.4kg (gross)
P/N	BFC-PAN-600-KKWN1-RP	BFC-PAN-600-KKWL1-RP
EAN	4712883215070	4712883215063
UPC	886027014547	886027014530

